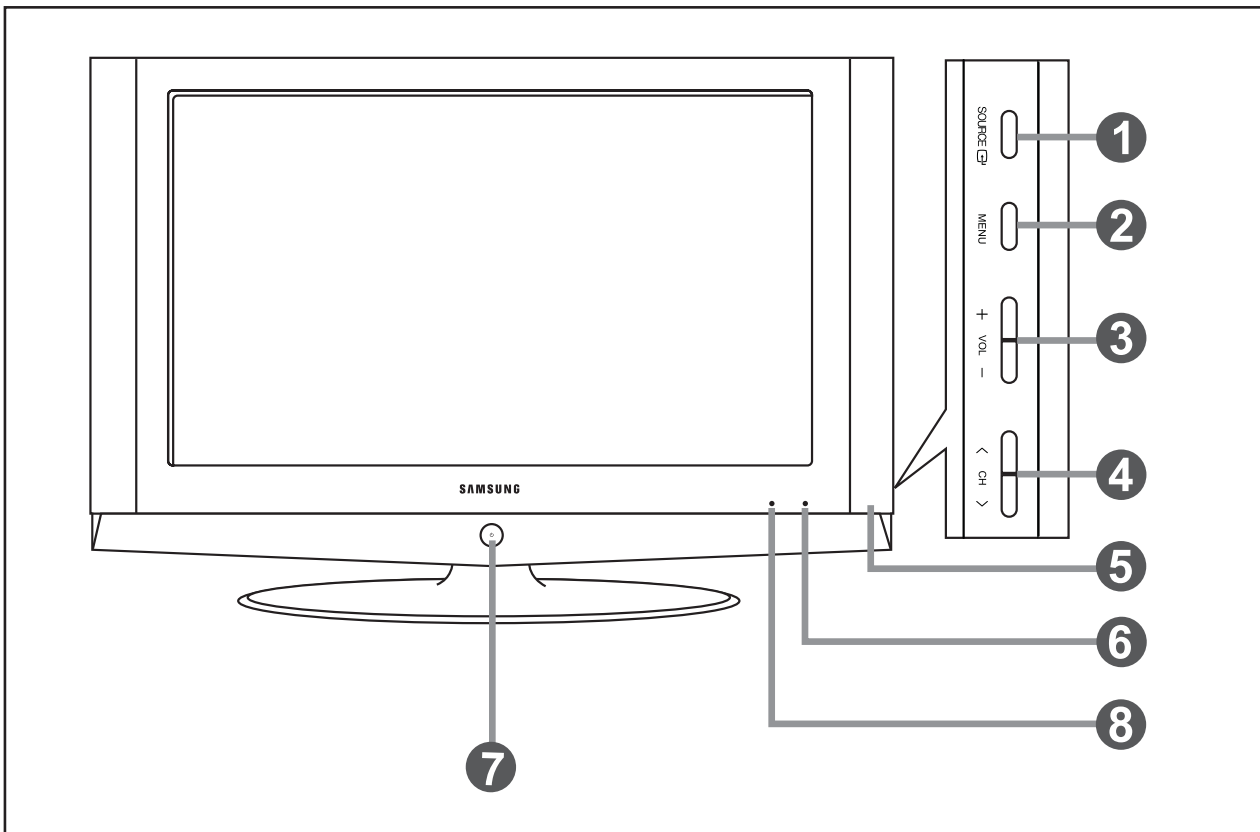


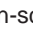
# 10 Operating Instructions and Installation

## 10-1 Front



- The product colour and shape may vary depending on the model.

### 1. SOURCE

Toggles between all the available input sources (TV, AV1, AV2, S-Video, Component1, Component2, PC, HDMI). In the on-screen menu, use this button as you use the **ENTER**  button on the remote control.

### 2. MENU

Press to see an on-screen menu of your TV's features.

### 3. + VOL -

Press to decrease or increase the volume.

In the on-screen menu, use the **+ VOL -** buttons as you use the **◀** and **▶** buttons on the remote control.

### 4. < CH >

Press to change channels.

In the on-screen menu, use the **< CH >** buttons as you use the **▼** and **▲** buttons on the remote control. (Without the Remote Control, you can turn on the TV by using the Channel buttons.)

### 5. Speakers

### 6. Remote Control Sensor

Aim the remote control towards this spot on the TV.

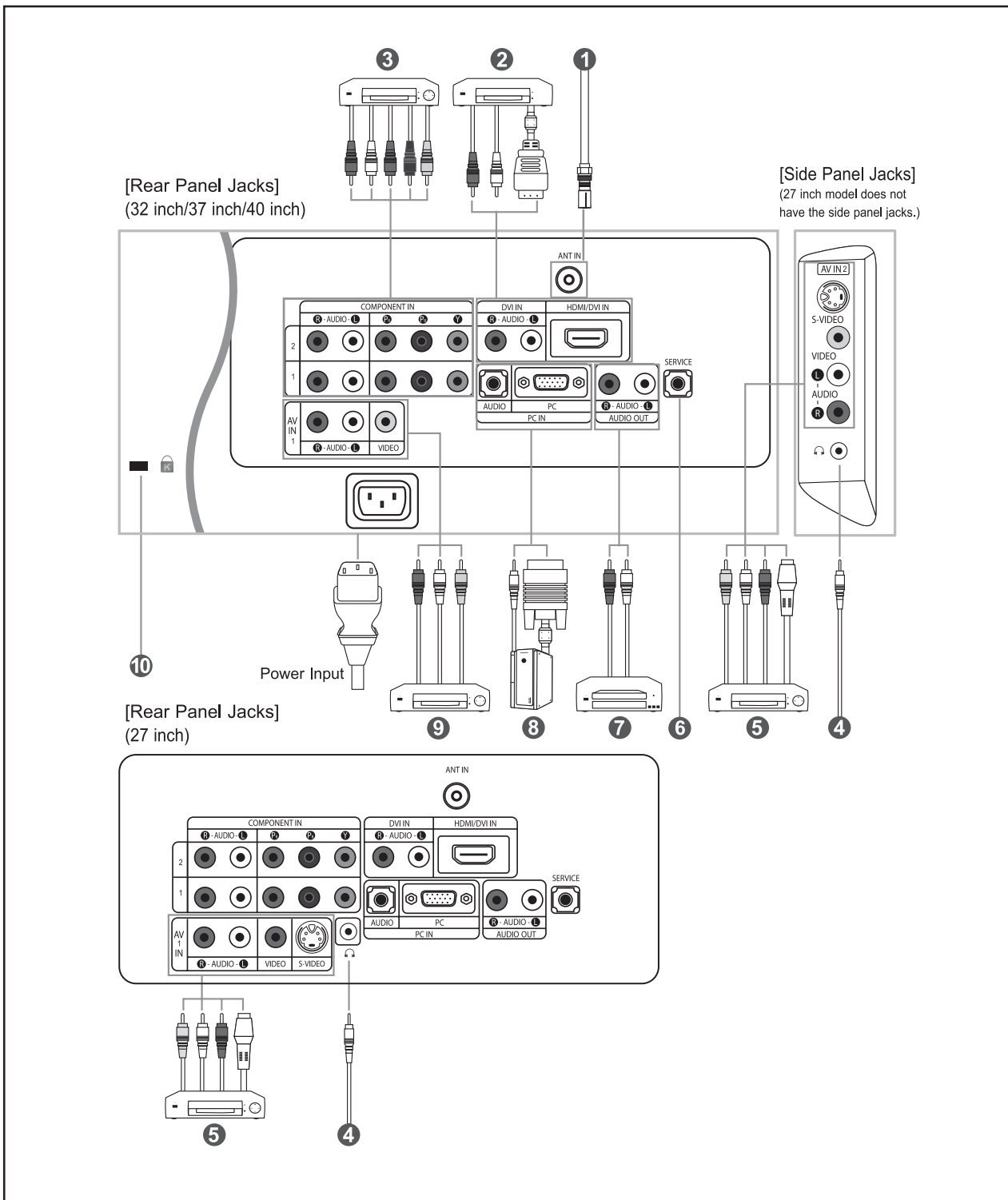
### 7. (Power)

Press to turn the TV on and off.

### 8. Power Indicator

Blinks and turns off when the power is on and lights up in stand-by mode.

10-2 Connection Panel



- Whenever you connect an external device to your TV, make sure that power on the unit is turned off.
- When connecting an external device, match the colour of the connection terminal to the cable.

**1. Connecting an Aerial or Cable Television Network**

To view television channels correctly, a signal must be received by the set from one of the following sources:

- An outdoor aerial / A cable television network / A satellite network

**2. Connecting HDMI/DVI**

- Supports connections between HDMI-connection-enabled AV devices (Set-Top Boxes, DVD players, AV receivers and digital TVs).

- No additional Audio connection is needed for an HDMI to HDMI connection.

## ▶ What is HDMI?

- "High Definition Multimedia interface" allows the transmission of high definition digital video data and multiple channels of digital audio ( 5.1 channels).

- The HDMI/DVI terminal supports DVI connection to an extended device with the appropriate cable (not supplied).

The difference between HDMI and DVI is that the HDMI device is smaller in size, has the HDCP (High Bandwidth Digital Copy Protection) coding feature installed, and supports multi - channel digital audio.

## ▶ You should use the DVI-to-HDMI cable or DVI-HDMI Adapter for the connection, and the "R - AUDIO - L" terminal on DVI for sound output.

- When connecting this product via HDMI or DVI to a Set Top Box, DVD Player or Games Console etc, make sure that it has been set to a compatible video output mode as shown in the table below.

Failure to observe this may result in picture distortion, image breakup or no picture.

## ▶ Supported modes for DVI or HDMI

	480i	480p	576i	576p	720p	1080i
50Hz	X	O	X	O	O	O
60Hz	X	O	X	X	O	O
Component	O	O	O	O	O	O

- Do not attempt to connect the HDMI/DVI connector to a PC or Laptop Graphics Card.

(This will result in a blank screen being displayed)

**3. Connecting Component Devices (DTV/DVD)**

- Connect component video cables (optional) to component connector ("PR", "PB", "Y") on the rear of your set and the other ends to corresponding component video out connectors on the DTV or DVD.

- If you wish to connect both the Set-Top Box and DTV (or DVD), you should connect the Set-Top Box to the DTV (or DVD) and connect the DTV (or DVD) to component connector ("PR", "PB", "Y") on your set.

- The PR, PB and Y connectors on your component devices (DTV or DVD) are sometimes labeled Y, B-Y and R-Y or Y, Cb and Cr.

- Connect RCA audio cables (optional) to "R - AUDIO - L" on the rear of your set and the other ends to corresponding audio out connectors on the DTV or DVD.

- This LCD TV displays its optimum picture resolution in 720p mode.

- This LCD TV displays its maximum picture resolution in 1 080i mode.

**5. Connecting External A/V Devices (AV IN 2)**

- Connect RCA or S-VIDEO cable to an appropriate external A/V device such as VCR, DVD or Camcorder.

- Connect RCA audio cables to "R - AUDIO - L" on the rear of your set and the other ends to corresponding audio out connectors on the A/V device.

- Headphone may be connected to the headphone output ( 4 ) on the rear of your set. While the headphone is connected, the sound from the built-in speakers will be disabled.

**6. SERVICE**

- Service connection for qualified service engineer.

**7. Connecting AUDIO**

- Connect RCA audio cables to "R - AUDIO - L" on the rear of your set and the other ends to corresponding audio in connectors on the Amplifier or DVD Home Theater.

**8. Connecting Computer**

- Connect the D- Sub cable (optional) to "PC (PC IN)" on the rear of your set and the other end to the Video Card of your computer.

- Connect the stereo audio cable (optional) to "AUDIO (PC IN)" on the rear of your set and the other end to "Audio Out" of the sound card on your computer.

**9. Connecting External A/V Devices (AV IN 1)**

- Connect RCA cable to an appropriate external A/V device such as VCR, DVD or Camcorder.

- Connect RCA audio cables to i°R - AUDIO - Lj± on the rear of your set and the other ends to corresponding audio out connectors on the A/V device.

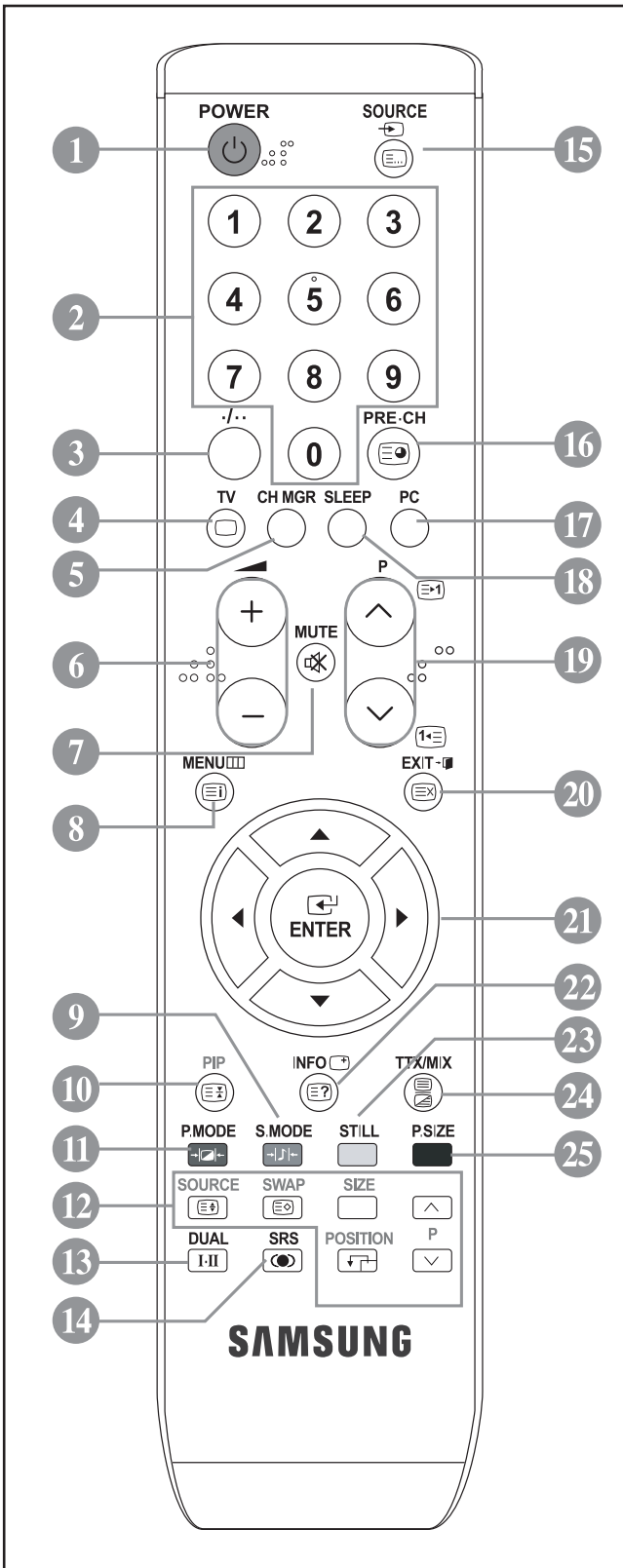
**10. Kensington Lock**

- The Kensington lock (optional) is a device used to physically fix the system when used in a public place.

- If you want to use a locking device, contact the dealer where you purchased the TV.

- The place of the Kensington Lock may be different depending on its model.

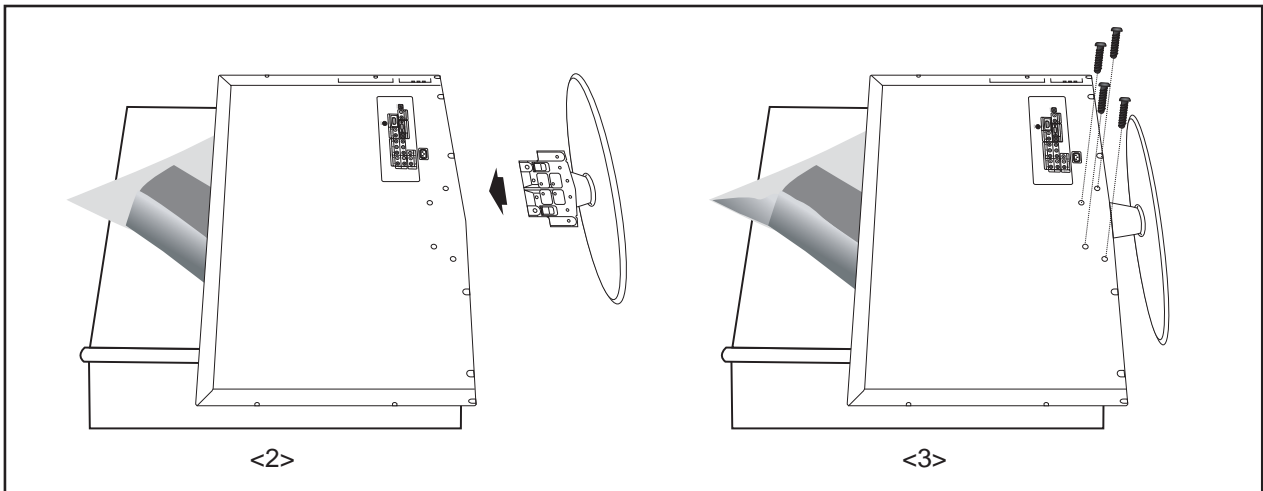
10-3 Remote Control



1. Television Standby button
  2. Number buttons for direct channel access
  3. One/Two-digit channel selection
  4. Selects the TV mode directly
  5. It display "Channel Manager" on the screen.
  6. + Volume increase  
- Volume decrease
  7. Temporary sound switch-off
  8. Menu display and change confirmation
  9. Sound mode selection
  10. Picture-In-Picture On / Off
  11. Picture effect selection
  12. PIP FUNCTIONS  
SOURCE: Input source selection  
SWAP: Interchange the main and sub picture  
SIZE: PIP size selection  
POSITION: PIP position selection  
P : Next channel  
P : Previous channel
  13. Sound effect selection
  14. SRS TSXT selection
  15. Available source selection
  16. Previous channel
  17. Selects the PC mode directly
  18. Automatic Power-off
  19. P : Next channel  
P : Previous channel
  20. Exit the OSD
  21. Control the cursor in the menu
  22. Use to see information on the current broadcast
  23. Picture freeze
  25. Picture size selection
- Teletext Functions**
4. Exit from the teletext display
  8. Teletext index
  10. Teletext hold
  12. **SOURCE**: Teletext size selection  
**SWAP**: Teletext store
  15. Teletext mode selection (LIST/FLOF)
  16. Teletext sub page
  19. P : Teletext next page  
P : Teletext previous page
  20. Teletext cancel
  22. Teletext reveal
  24. Alternately select Teletext, Double, or Mix.
  9. 10. 13. 25. Fastext topic selection

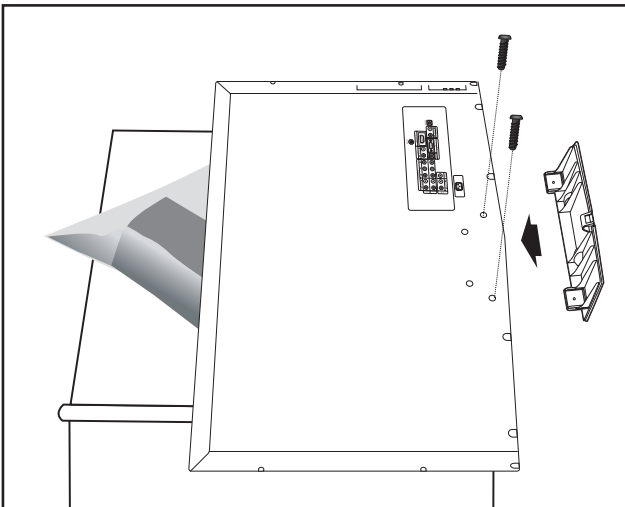
- ▶ The performance of the remote control may be affected by bright light.
- ▶ This is a special remote contro for the visually impaired, and has Braille points on the Power, Channel and Volume buttons.

## 10-4 Installing the Stand



1. Place the TV faced down on a soft cloth or cushion on a table.
2. Put the stand into the hole at the bottom of the TV.
3. Insert screw into the hole indicated and tighten.
  - ▶ The stand is installed for models with the screen size of 40 inch and above.

## 10-5 Installing the Wall Mount Kit



Wall mount items (sold separately) allow you to mount the TV on the wall.

For detailed information on installing the wall mount, see the instructions provided with the Wall Mount items. Contact a technician for assistance when installing the wall mounted bracket.

Samsung Electronics is not responsible for any damage to the product or injury to yourself or others if you elect to install the TV on your own.

- ▶ Remove the stand and cover the bottom hole with a cap and fasten with two screws.

## Memo