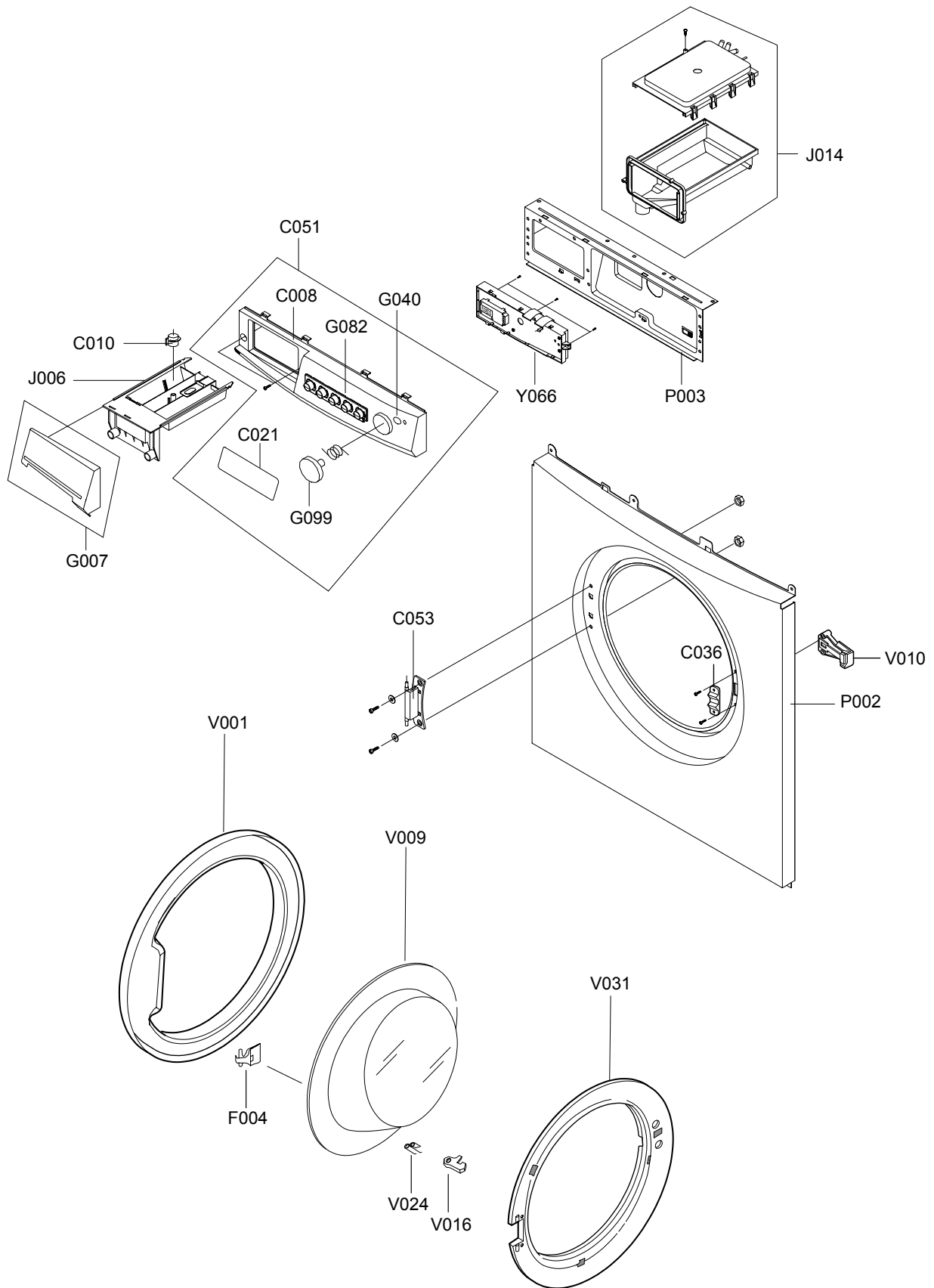
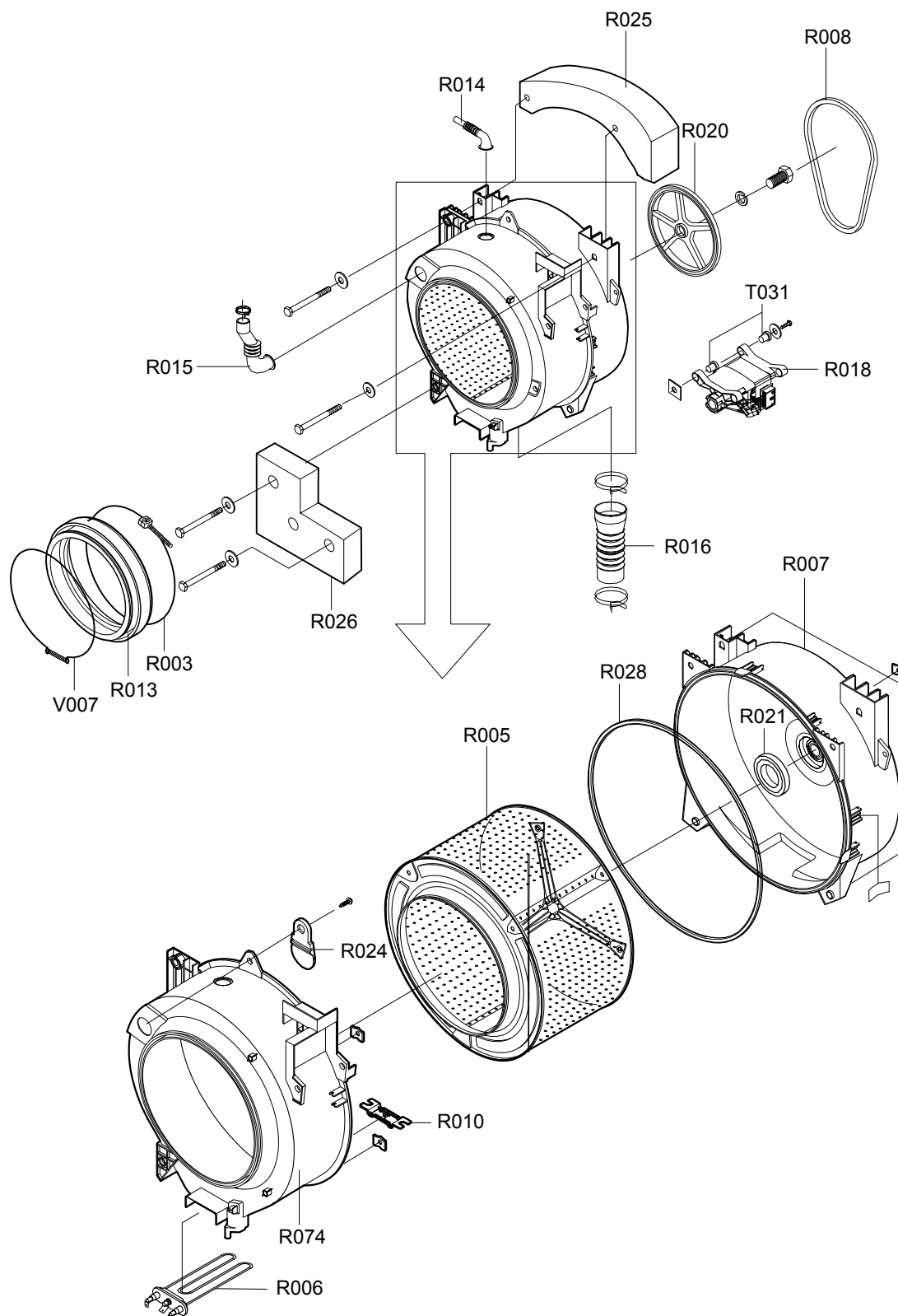

15. TOP(FRONT) - Exploded View



15. TOP Parts List

| NO. | CODE NO. | DESCRIPTION;SPECIFICATION | QTY |
|------|--------------|--|-----|
| C008 | DC64-00814F | PANEL-CONTROL;S1043GW/YLP,ABS,-,-,-,WH | 1 |
| C010 | DC61-10316B | CAP-RINSE;SEW-740DR,PP(TB-52),-,-,-,WHT, | 1 |
| C021 | DC64-00864A | INLAY-PANEL;R(P/F/S)1043,PC,T0.5,-,-,WHT | 1 |
| C036 | DC63-00450A | COVER-FRONT;S821,PP,T1.8,-,-,-,WHT,GUI | 1 |
| C051 | DC97-07427F | ASSY-PANEL CONTROL;MID-PJT/S1043,WHT/RUS | 1 |
| C053 | DC61-00889B | HINGE-DOOR;R1033,ALDC,-,-,-,-,180 DEG | 1 |
| F004 | DC64-00646A | HANDLE-DOOR;SD455-PJT,POM,-,-,-,WHT,RO | 1 |
| G007 | DC97-05469Y | ASSY-PANEL FRONT;MID-PJT/R(F/S),WHT/RUSS | 1 |
| G040 | DC64-00812A | BUTTON-PUSH(P);P/R/F/SLIM,ABS,-,-,SNOW-W | 1 |
| G082 | DC64-00813A | BUTTON-PUSH(F);P/R/F/SLIM,ABS,-,-,SNOW-W | 1 |
| G099 | DC64-00811A | BUTTON-PUSH(S);P/R/F/SLIM,ABS,-,-,SNOW-W | 1 |
| J006 | DC61-00366A | BODY-DRAWER;SL-600,TB-53,-,-,-,-,- | 1 |
| J014 | DC97-06572D | ASSY-HOUSING DRAWER;SLIM-PJT,2WAY/COLD/V | 1 |
| P002 | DC97-00702A | ASSY-FRAME FRONT;P6091,ROUND-TYPE | 1 |
| P003 | DC97-00417A | ASSY-FRAME PLATE(U);SWF-P12,FRAME-PLATE(| 1 |
| V001 | DC63-00391A | COVER-DOOR;HAUZEN(DOM),ABS,-,-,-,-,WHT | 1 |
| V009 | DC61-00013A | DOOR-GLASS;GLASS,NTR,SWF-P12 | 1 |
| V010 | DC64-00653A | DOOR-LOCK S/W;DA,PA6-G,-,H82,W50,-,BLK,2 | 1 |
| V016 | DC66-00358B | LEVER-DOOR;SEW-HW105,ALDC,-,-,-,-,WHT,EM | 1 |
| V024 | DC61-00890A | SPRING-HANDLE;HAUZEN(DOM),STS304,CD1.0,- | 1 |
| V031 | DC61-00888A | HOLDER-GLASS;HAUZEN,ABS,-,-,-,WHT,AUTO+M | 1 |
| Y066 | MFS-S1043-00 | ASSY PCB PARTS;S1043 35CM 3.5KG 1000RPM | 1 |

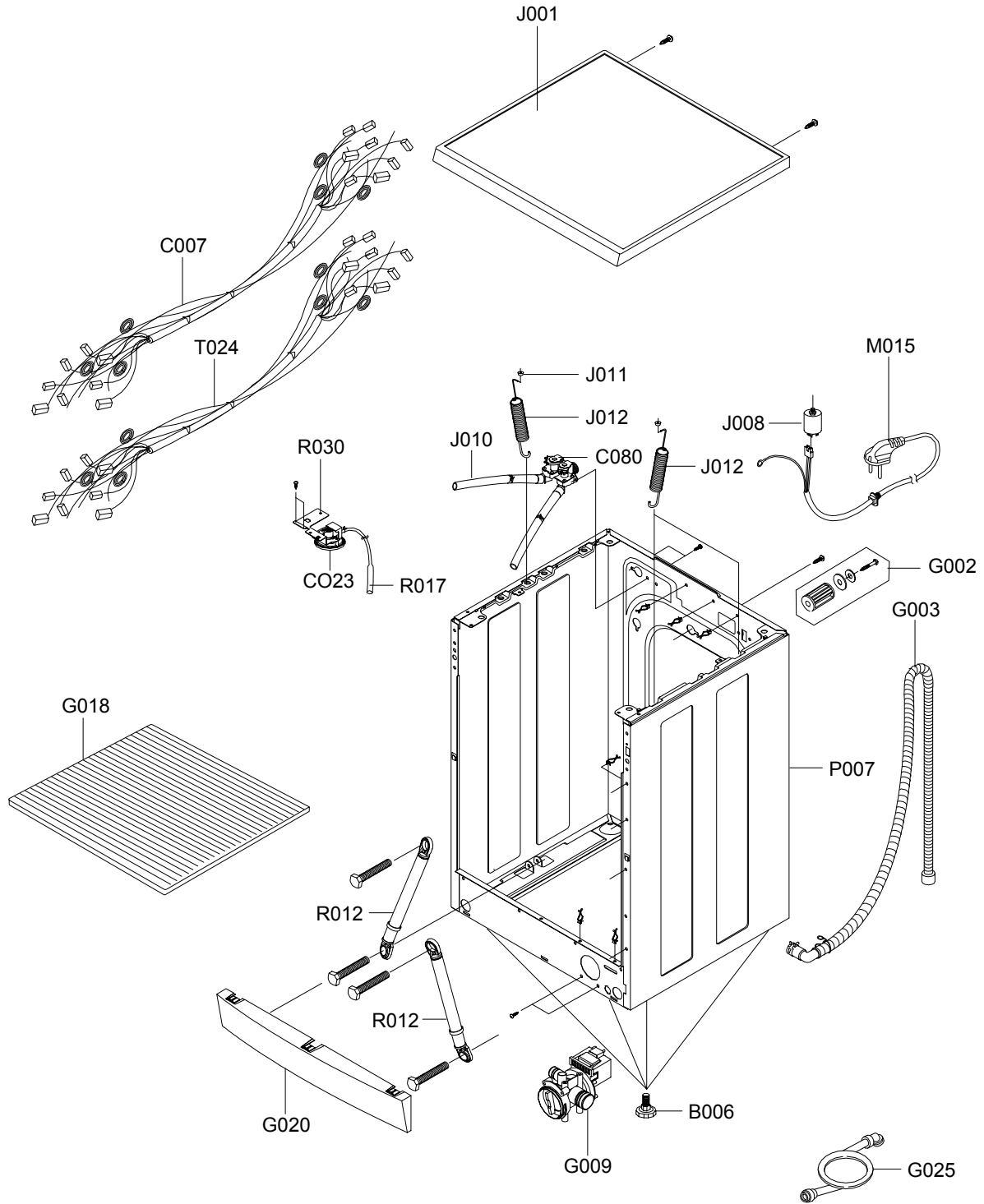
15. TUB - Exploded View



15. TUB Parts List

| NO. | CODE NO. | DESCRIPTION;SPECIFICATION | QTY |
|------|-------------|--|-----|
| R003 | DC91-12077A | ASSY-CLAMP DIAPHRAGM;SWF-P12,TUB | 1 |
| R005 | DC97-02099D | ASSY-DRUM;S1005J/KRNJM,LEFTER TYPE | 1 |
| R006 | DC47-00006B | HEATER;KAWAI,P-SLIM MODEL,SUS316L,-,-,23 | 1 |
| R007 | DC97-02137B | ASSY-TUB BACK;SB-PJT,SAMBAK(10%) | 1 |
| R008 | 6602-001073 | BELT-TIMING GEAR;POLYURETHAN,1270,J3,MEG | 1 |
| R010 | DC61-00856A | BRACKET-HEATER;SB-PJT,STS430,-,-,-,-,- | 1 |
| R013 | DC61-20219A | DOOR-DIAPHRAGM;EPDM,-,-,-,-,-,GRY,SWF- | 1 |
| R014 | DC62-10303A | HOSE-AIR;-,-,EPDM,ID24,-,-,L130,BLK,SWF-P1 | 1 |
| R015 | DC62-10305A | HOSE-DRAWER TUB;-,-,EPDM,ID35,-,-,L158,BLK | 1 |
| R016 | DC62-00121A | HOSE-FILTER TUB;S1005J,EPDM,ID65,-,-,-,-,- | 1 |
| R018 | DC31-00002H | MOTOR-DRUM;HXGP2I,S803J,-,-,50HZ,-,-,LOW-R | 1 |
| R020 | DC66-00060A | PULLEY;FRPP,-,-,D297,SWF-PV2,ID12.5 | 1 |
| R021 | DC62-00007B | SEAL-OIL;SB-PJT,NBR(SD25),BLK,-,-,-,-,JINY | 1 |
| R024 | DC62-20311A | VANE-CHECK;SWF-P12,EPDM,-,-,-,-,BLK,-,- | 1 |
| R025 | DC66-00137A | WEIGHT-BALANCER;SL-600,CONCREET,SLIM/UPP | 1 |
| R026 | DC66-00172A | WEIGHT-BALANCER;SL-600,GC-150,SLIM/LOWER | 1 |
| R028 | DC62-40183A | PACKING-TUB;SWF-P12,EPDM,-,-,-,-,-,BLK,-,- | 1 |
| R074 | DC61-00365C | TUB-FRONT;SB-PJT,FRPP(GR10%)SAMBAK,-,-,-,-,- | 1 |
| T031 | DC61-00041A | CUSHION-MOTOR;SWF-6V,BUTYL,-,-,-,-,-,ID16/OD | 1 |
| V007 | DC91-12078A | ASSY-WIRE DIAPHRAGM;SWF-P12,FRAME-FRONT | 1 |

15. CASE - Exploded View



15. CASE Parts List

| NO. | CODE NO. | DESCRIPTION;SPECIFICATION | QTY |
|------|-------------|--|------|
| B006 | DC97-02079C | ASSY-LEG;SB-PJT,SLIM/25MM/CHINA | 4 |
| C007 | DC96-00778A | ASSY-M.WIRE HARNESS;S1043,CIS-M 34cm | 1 |
| C023 | DC32-30006P | SENSOR PRESSURE;DN-S14(P1291),TERMINAL-T | 1 |
| C080 | DC62-00024F | VALVE-WATER;B1215J,NYLON66/250TRMN,-,-,N | 1 |
| G002 | DC97-02106A | ASSY-FIXER TUB;S1005J,SLIM-PJT | 5 |
| G003 | DC97-00139E | ASSY-HOSE DRAIN(O);SB-PJT,PP/L1770/CHINA | 1 |
| G009 | DC96-00149A | ASSY-PUMP DRAIN;P8091/P6091,220~240V/50H | 1 |
| G018 | DC61-00440A | SHUTTER;SLIM-PJT,PP,WHT, | 1 |
| G020 | DC61-10672A | COVER-FRONT(L);SWF-P12,PP(BJ-730),-,-,-, | 1 |
| G025 | DC62-10289B | HOSE-WATER(C);WIP4013SRW,PVC+NYLON,ID10. | 1 |
| J001 | DC97-04627A | ASSY-COVER TOP;SB-PJT,ABS/WHT | 1 |
| J008 | DC29-00006A | FILTER-EMI;DFC-2712R,P/PV/SLIM,250V,12A, | 1 |
| J010 | DC67-00051A | HOSE-DRAWER;S1093~S6093,EPDM,-,-,-,BLK | 0.26 |
| J011 | DC61-60180A | SLEEVE-PLUG;NYLON#6,SEW-720DR,-,-,NTR | 2 |
| J012 | DC61-00441A | SPRING-HANGER;S1005J,HSWR,CD3.0,-,-,L175 | 2 |
| M015 | DC96-00146A | ASSY POWER CORD;UCP2,-,250V/16A,-,-,-,-, | 1 |
| P007 | DC99-00138A | ASSY-PAINT FRAME;S803J,COLD/SLIM-MODEL | 1 |
| R012 | DC66-00320A | DAMPER-SHOCK;SB-PJT,ABS,-,-,-,WHT,AKS- | 2 |
| R017 | DC67-00107A | HOSE-PRESSURE;S821,PE-BLOW,ID13.2,OD6.2, | 1 |
| R030 | DC61-40345A | BRACKET-PRESSURE;GI or GA,SWK-P12,T1.0,- | 1 |
| T024 | DC96-00522A | ASSY-WIRE HARNESS;SS-PJT,SUB | 1 |

15. Screw/Bolt List

| CODE NO. | DESCRIPTION | SPECIFICATION | REMARK | QTY |
|-------------|---------------|--|---------------------|-----|
| 6001-001773 | SCREW-MACHINE | TH,+,M5,L12, | HINGE+FRAME | 2 |
| 6002-001006 | SCREW-TAPPING | TH,+,2S,M4,L12,-,STS410 | DOOR-S/W | 2 |
| 6002-001006 | SCREW-TAPPING | TH,+,2S,M4,L12,-,STS410 | - | 11 |
| DD60-50018A | NUT-FLANGE | -,M5XP0.8,FZY,MSWR10,- | HINGE+FRAME | 2 |
| 6002-000213 | SCREW-TAPPING | TH,+,1,M4,L12,ZPC(YEL),SWRCH18 | CLAMP-HOSE+FRAME | 1 |
| 6002-000239 | SCREW-TAPPING | TH,+,2S,M4,L8,ZPC(YEL),SM20C | FRAME+FRAME-FRONT | 7 |
| 6002-000239 | SCREW-TAPPING | TH,+,2S,M4,L8,ZPC(YEL),SM20C | FRAME+PLATE-UPPER | 4 |
| 6002-000525 | SCREW-TAPPING | FH,+,1,M4,L12,PASS,STS304 | C-PANEL+FRAME | 1 |
| 6002-000554 | SCREW-TAPPING | PH,+,2S,M4,L12,ZPC(YEL),SWRCH1 | PCB+C-PANEL | 3 |
| 6002-001006 | SCREW-TAPPING | TH,+,2S,M4,L12,-,STS410 | PUMP+FRAME | 2 |
| 6006-001170 | SCREW-TAPPING | WS,TH,+,M4,L10,ZPC(YEL) | E/W(SUB)+FRAME(F) | 1 |
| 6009-001343 | SCREW-SPECIAL | PH,TORX,+,M4,L10,PASS | P/CORD | 1 |
| DC60-40144A | BOLT-HEX | M10,L41,ZPC2(YEL),SM10C/DAMPER | DAMPER+FRAME | 2 |
| DC60-40146A | BOLT-SPANER | -,OD36,T2.5,L52,FE,FZY,-,P12 | ACCESSORY | 1 |
| 6011-001421 | BOLT-FLANGE | M7,L61(29.4),ZPC(YEL),SWRCH18A | - | 1 |
| DC60-60040A | WASHER-NYLON | -,ID10.5,OD32,T2,-,PBSP-1/2H | FIXER | 1 |
| DC60-60044B | WASHER-PLAIN | SBC,ID8.4,OD30,T3,-,- | FIXER | 1 |
| 6002-000239 | SCREW-TAPPING | TH,+,2S,M4,L8,ZPC(YEL),SM20C | MAIN PCB1 | 1 |
| 6002-000239 | SCREW-TAPPING | TH,+,2S,M4,L8,ZPC(YEL),SM20C | MAIN PCB2 | 1 |
| 6002-000630 | SCREW-TAPPING | PH,+,2S,M3,L8,ZPC(YEL),SWRCH18 | BD1 | 1 |
| 6002-000630 | SCREW-TAPPING | PH,+,2S,M3,L8,ZPC(YEL),SWRCH18 | TRIAC1 | 1 |
| 6002-000445 | SCREW-TAPPING | TH,+,2S,M4,L18,NTR,STS304 | PANEL+FRM+HOUSING-D | 2 |
| 6002-000554 | SCREW-TAPPING | PH,+,2S,M4,L12,ZPC(YEL),SWRCH1 | HOUSING-DRAWER | 1 |
| 6002-001327 | SCREW-TAPPING | PWH,+,1,M4,L12,NI PLT | C/TOP+FRAME | 2 |
| 6003-000226 | SCREW-TAPTITE | TH,+,S,M4,L8,ZPC(YEL),SWRCH18A | W/V+FRAME | 2 |
| 6006-001170 | SCREW-TAPPING | WS,TH,+,M4,L10,ZPC(YEL) | B/K-PRESSURE+FRAME | 1 |
| 6006-001170 | SCREW-TAPPING | WS,TH,+,M4,L10,ZPC(YEL) | P/CORD(E/W) | 1 |
| 6009-001342 | SCREW-SPECIAL | TH,+,M5,L11,ZPC(YEL) | FRAME(TOP) | 2 |
| 6002-000630 | SCREW-TAPPING | PH,+,2S,M3,L8,ZPC(YEL),SWRCH18 | B/K+PRE-S/W | 2 |
| 6002-000470 | SCREW-TAPPING | TH,+,1,M4,L10,ZPC,SCRCH18A | B/K-C.T | 2 |
| 6002-001327 | SCREW-TAPPING | PWH,+,1,M4,L12,NI PLT | - | 1 |
| 6011-001421 | BOLT-FLANGE | M7,L61(29.4),ZPC(YEL),SWRCH18A | WEIGHT/L | 1 |
| 6011-001422 | BOLT-HEX | M10,L20,ZPC(YEL),SWRCH10A | - | 1 |
| DC60-40141A | BOLT-HEX | SM10C/DAMPER,HEX,M8,L66,-,ZPC2(YEL),-,- | DAMPER+TUB | 2 |
| DC60-50148B | NUT-HEX | SM20C(NYLON),M12,-,ZPC3(YEL),-,HEX,P-PROJECT | PULLEY | 1 |
| DC60-60044A | WASHER-PLAIN | -,ID10.5,OD30,T3,-,STS304 | DAMPER+TUB | 2 |
| DC60-60049A | WASHER-SPRING | -,ID10.5,OD18,T2.5,-,SIR | - | 1 |
| DC61-00201A | BRACKET-NUT | SBHG-R,P1291,T3,-,-,NO-PAINT/MOTOR | MOTOR | 1 |
| 6011-001492 | BOLT-FLANGE | M8,L25,PASS,STS304,NYLOCK,P1.25 | - | 3 |
| 6006-001170 | SCREW-TAPPING | WS,TH,+,M4,L10,ZPC(YEL) | - | 1 |
| DC61-40348B | BRACKET-NUT | SBHG-R,P1291,T3,-,-,NO-PAINT | - | 2 |
| 6002-000444 | SCREW-TAPPING | TH,+,2S,M4,L14,NTR,STS304 | B/K-HEATER | 2 |
| 6002-000471 | SCREW-TAPPING | TH,+,1,M4,L12,PASS,STS304,- | VANE-CHECK | 1 |
| 6002-001327 | SCREW-TAPPING | PWH,+,1,M4,L12,NI PLT | HOSE-PRESSURE | 1 |
| DC61-40348B | BRACKET-NUT | SBHG-R,P1291,T3,-,-,NO-PAINT | - | 2 |
| DC60-40005A | BOLT-HEX | M4,L60,ZPC2(YEL),SS41C,-,-,- | - | 1 |
| DC60-50010A | NUT-DIAPHRAGM | EGI,M4,-,-,2.5TX20X8 | - | 1 |
| DC60-50010B | NUT-DIAPHRAGM | EGI,M4.2,-,-,2.5TX20X8 | - | 1 |
| DC97-02412A | ASSY-BOLT | SWF-P12,MOTOR, M8*L62 | MOTOR | 1 |
| DC97-02412A | ASSY-BOLT | SWF-P12,MOTOR, M8*L62 | WEIGHT-BALANCER(L) | 1 |
| DC97-02412B | ASSY-BOLT | SWF-P12,WEIHGT(L)/M8*L147 | WE-GHT-BALANCER(U) | 2 |



❗ This Service Manual is a property of Samsung Electronics Co.,Ltd.
Any unauthorized use of Manual can be punished under applicable
International and/or domestic law.

©Samsung Electronics Co., Ltd. AUGUST 2004
Printed in Korea
Code No. : DC68-02278A