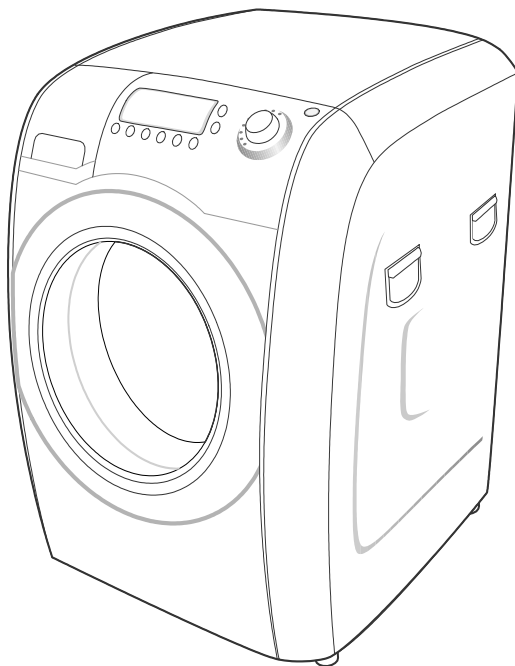


SAMSUNG

HAUZEN

H1245AGS/YLP

SERVICE MANUAL

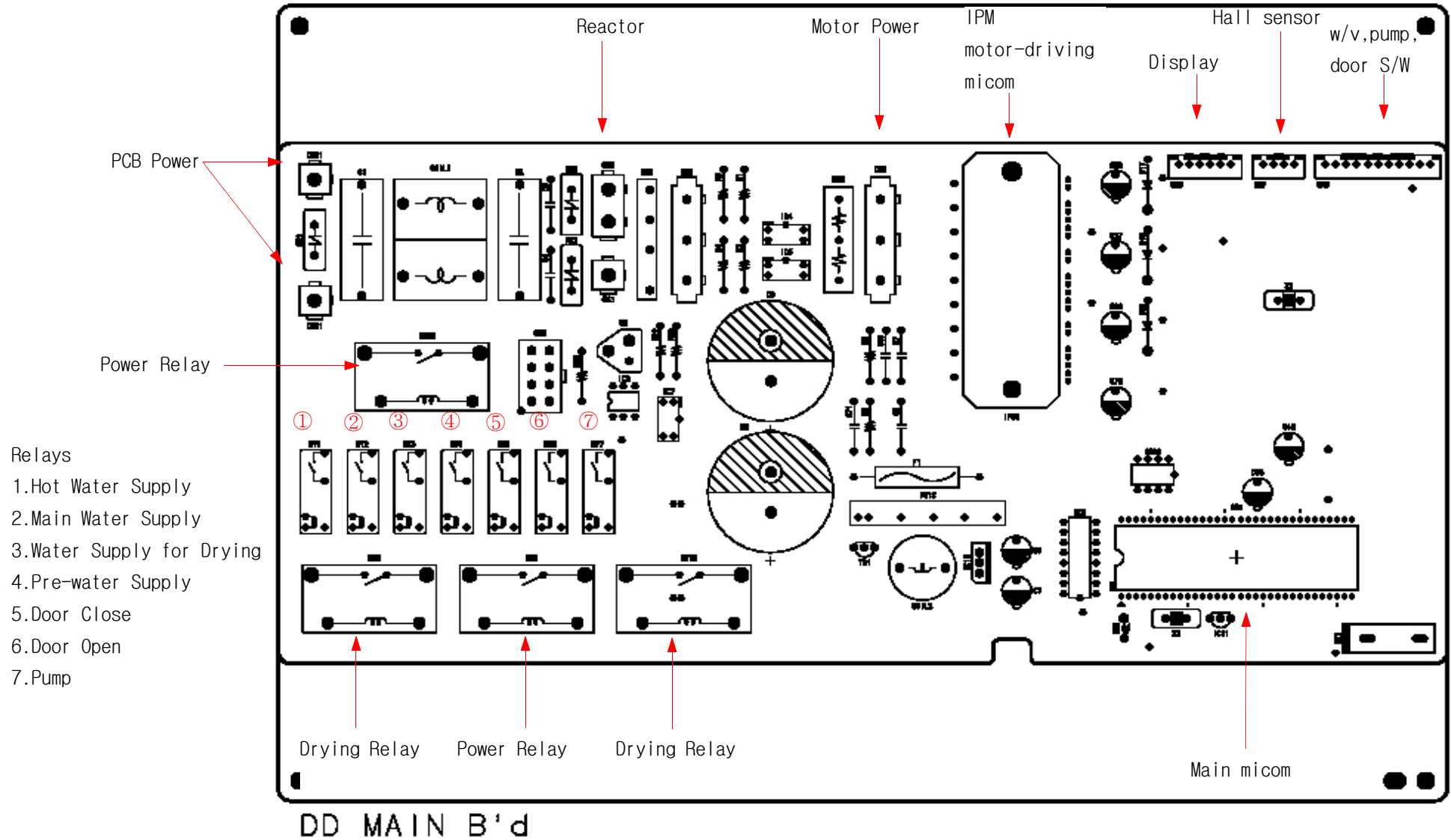


CONTENTS

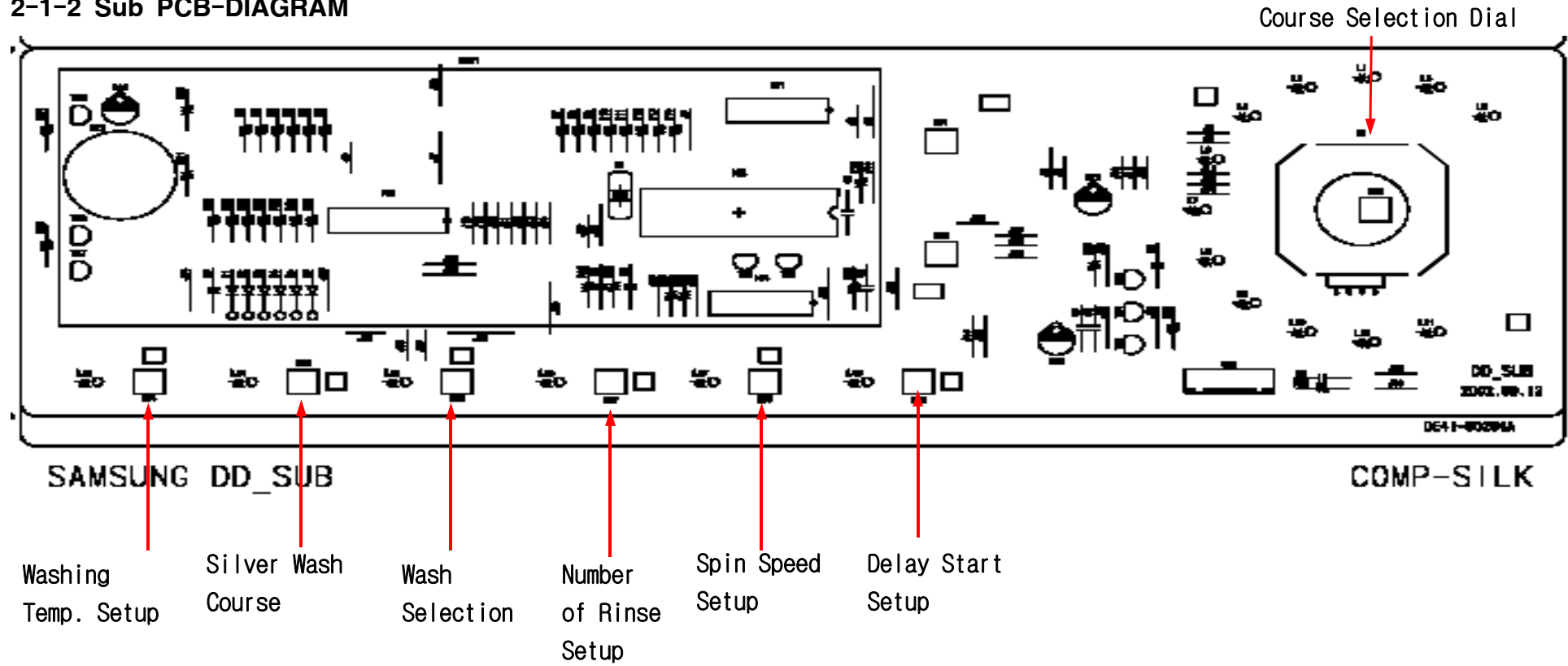
1. Exploded Views and Parts List
2. P.C.B Diagrams
 - 3-1. PCB-DIAGRAM
 - 3-2. Circuit Diagrams
 - 3-3. Circuit Diagram of MAIN CONTROL
 - 3-4. Circuit Diagrams of Main Parts
3. Error Mode
4. Symptoms of Errors and Related Parts List
5. Tools used for assembly and disassembly

2. P.C.B Diagrams

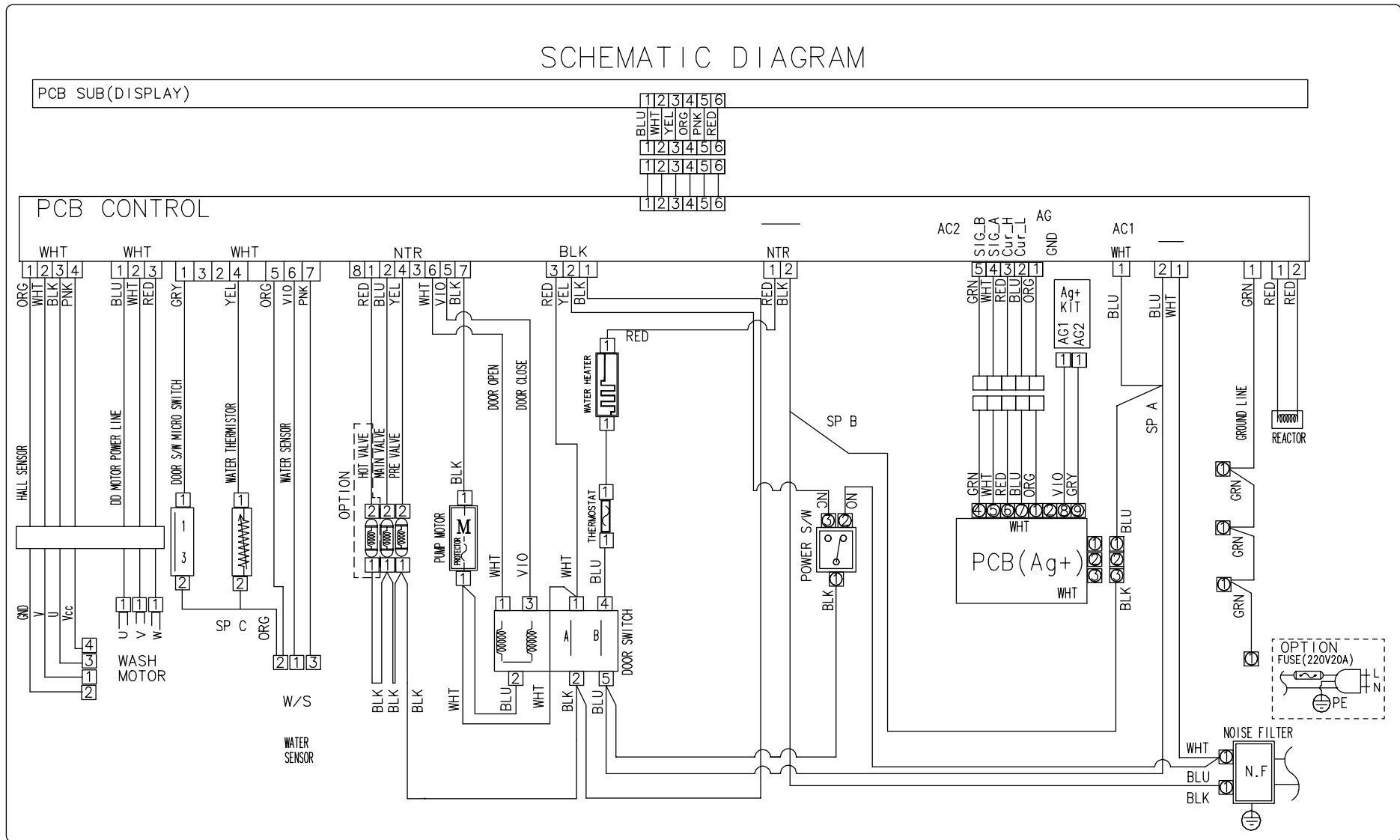
2-1-1 Main PCB-DIAGRAM



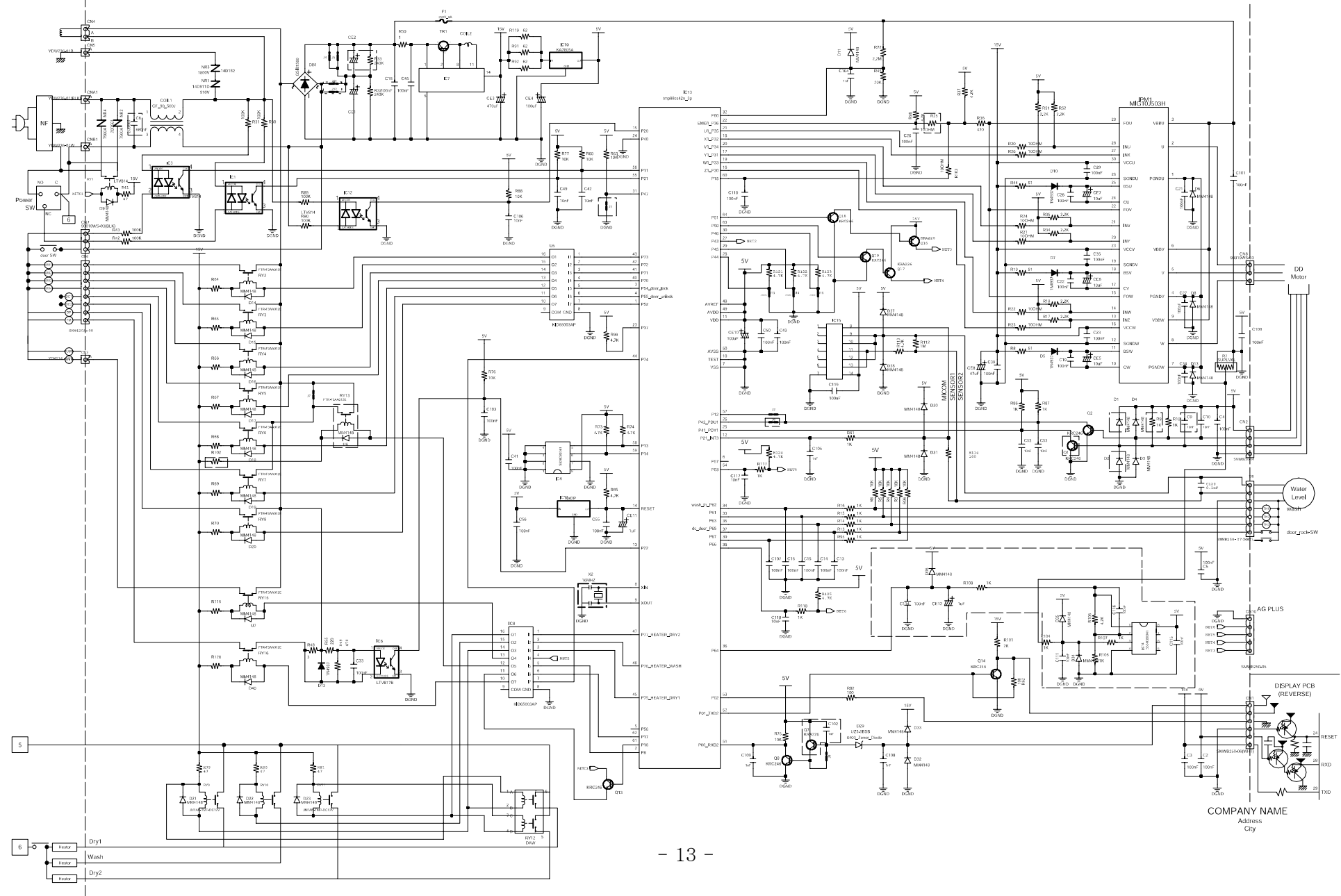
2-1-2 Sub PCB-DIAGRAM



2-2. Circuit Diagrams

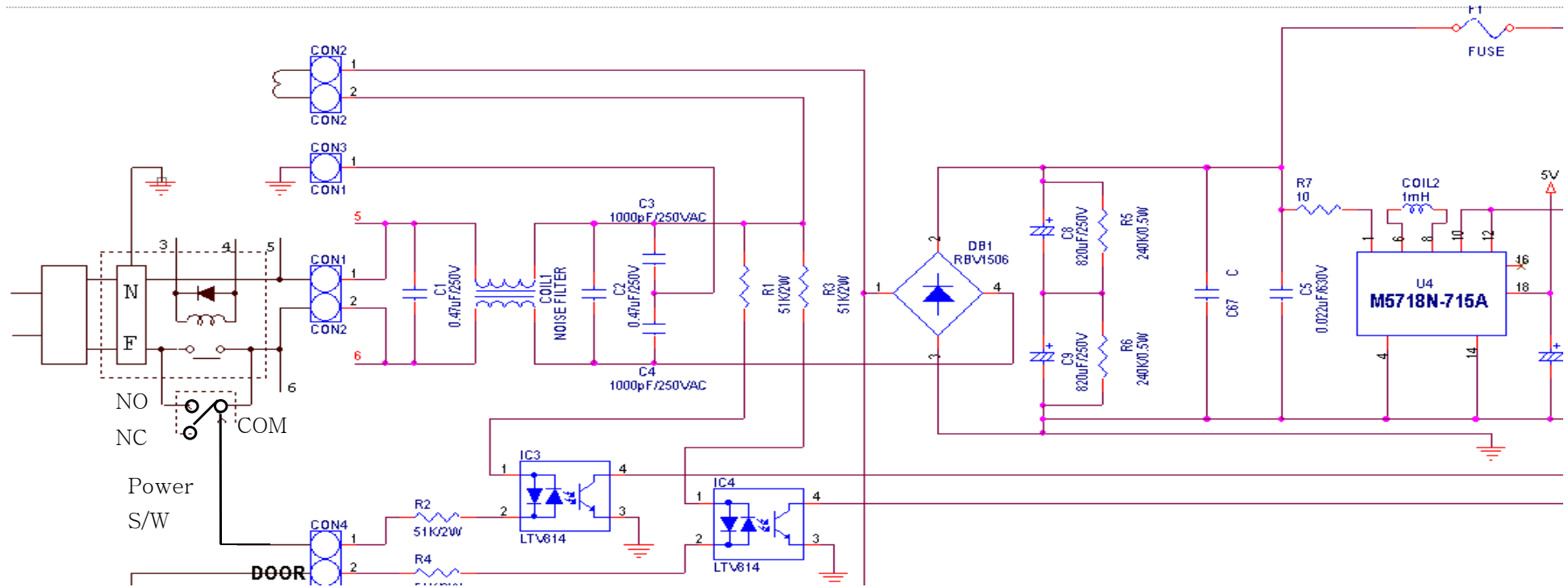


2-3. Circuit Diagram of MAIN CONTROL



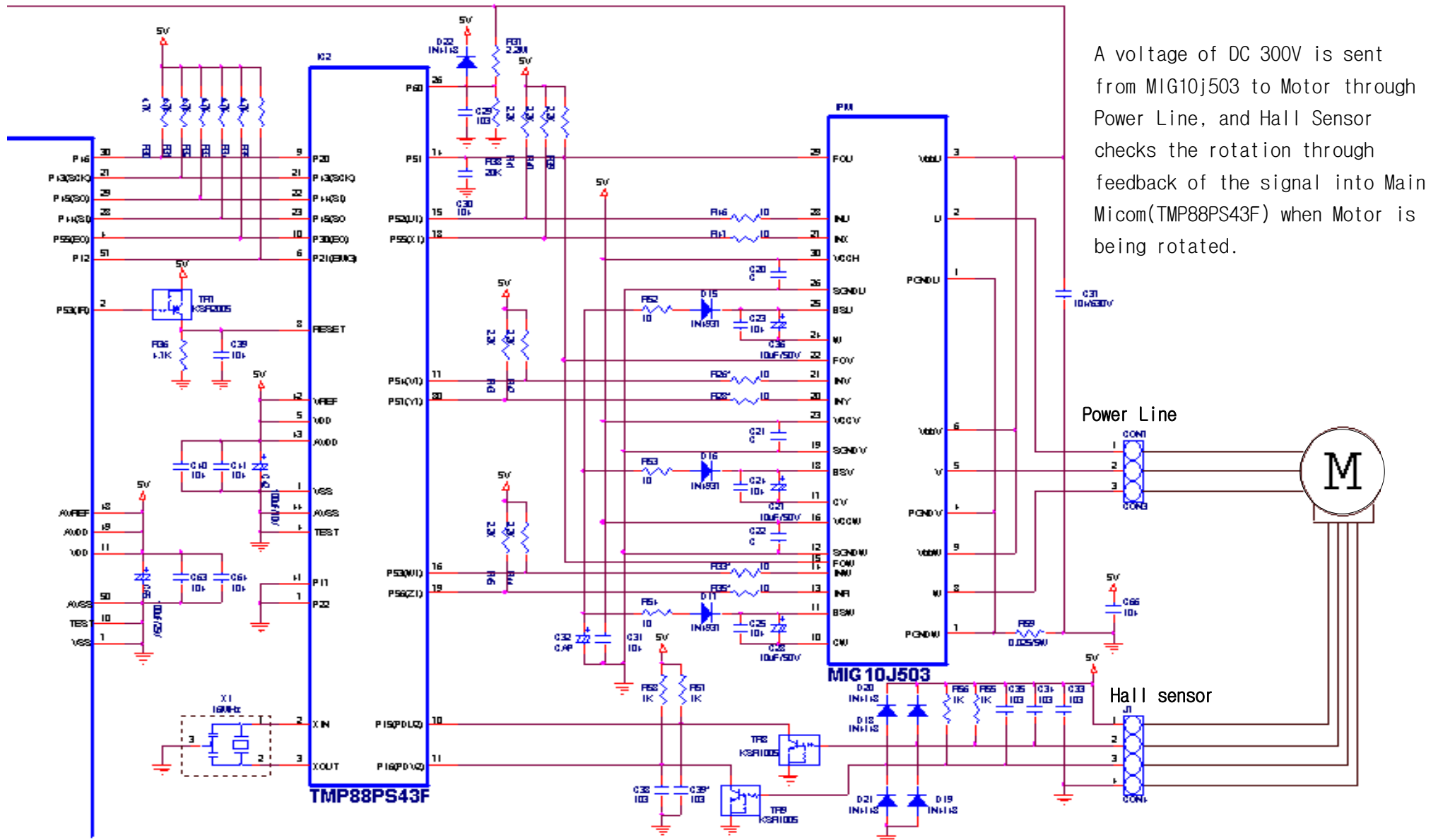
2-4. Circuit Diagrams of Main Parts

1. Power



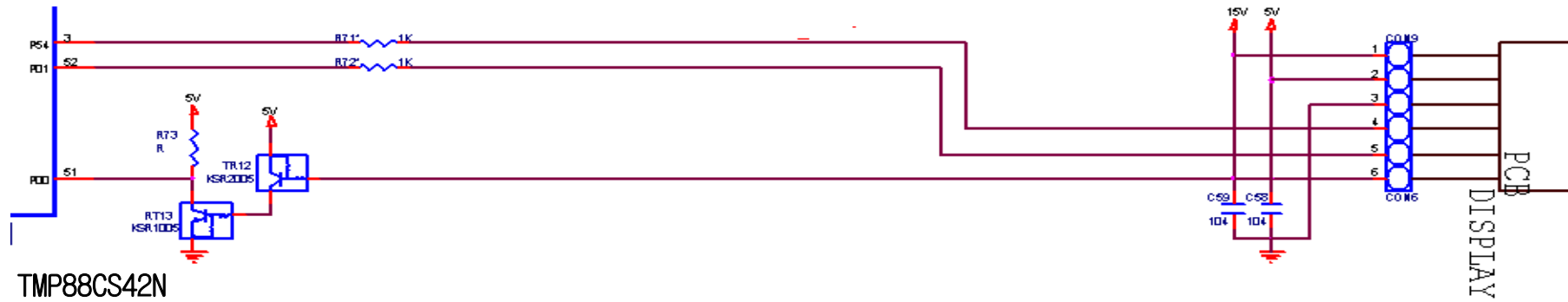
Press of Power S/W switches NC to NO and makes Micom start to drive. At this moment, sequential signals generated from Micom function to operate Power Relay continuously. One more press of Power S/W switches NC to NO and permits Micom to accept the signal. It will cut off Power by switching the Relay ON/OFF.

MOTOR-Driving Part

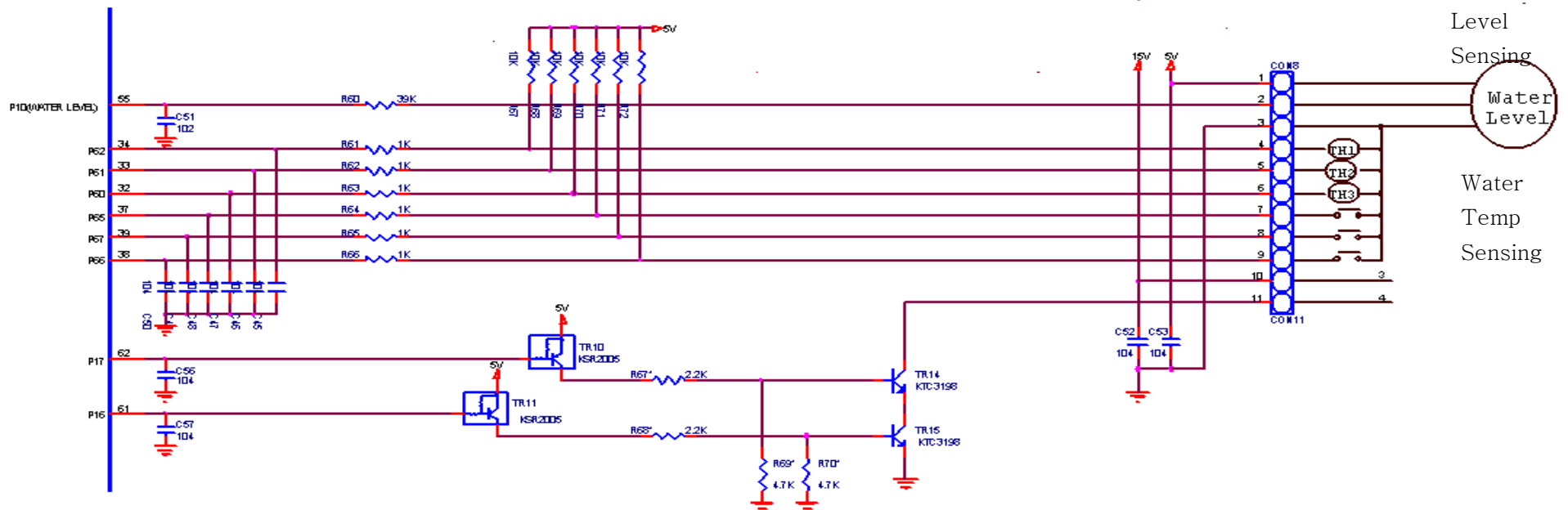


A voltage of DC 300V is sent from MIG10j503 to Motor through Power Line, and Hall Sensor checks the rotation through feedback of the signal into Main Micom(TMP88PS43F) when Motor is being rotated.

Display Part

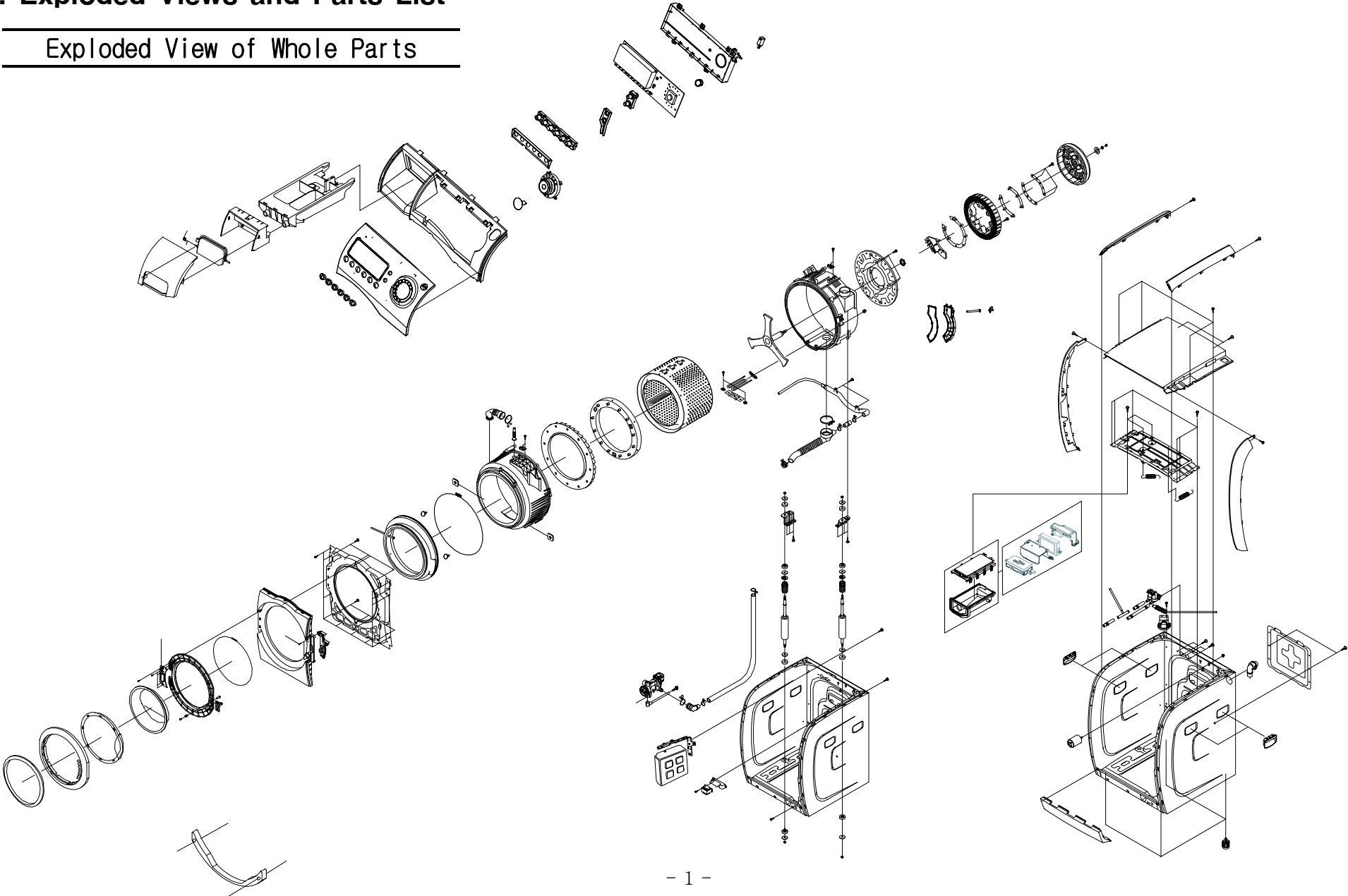


Water Temperature & Level Sensors

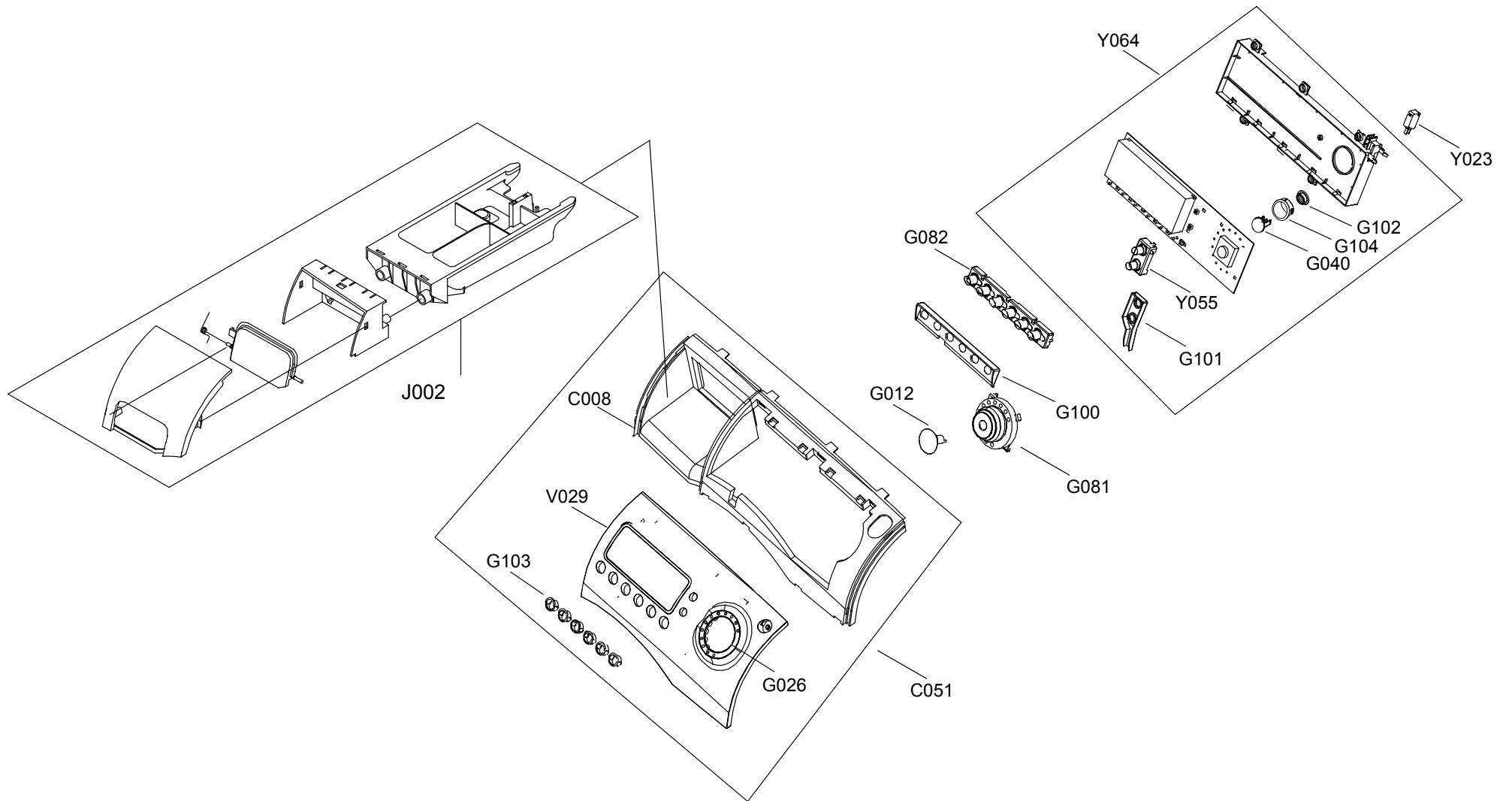


1. Exploded Views and Parts List

Exploded View of Whole Parts



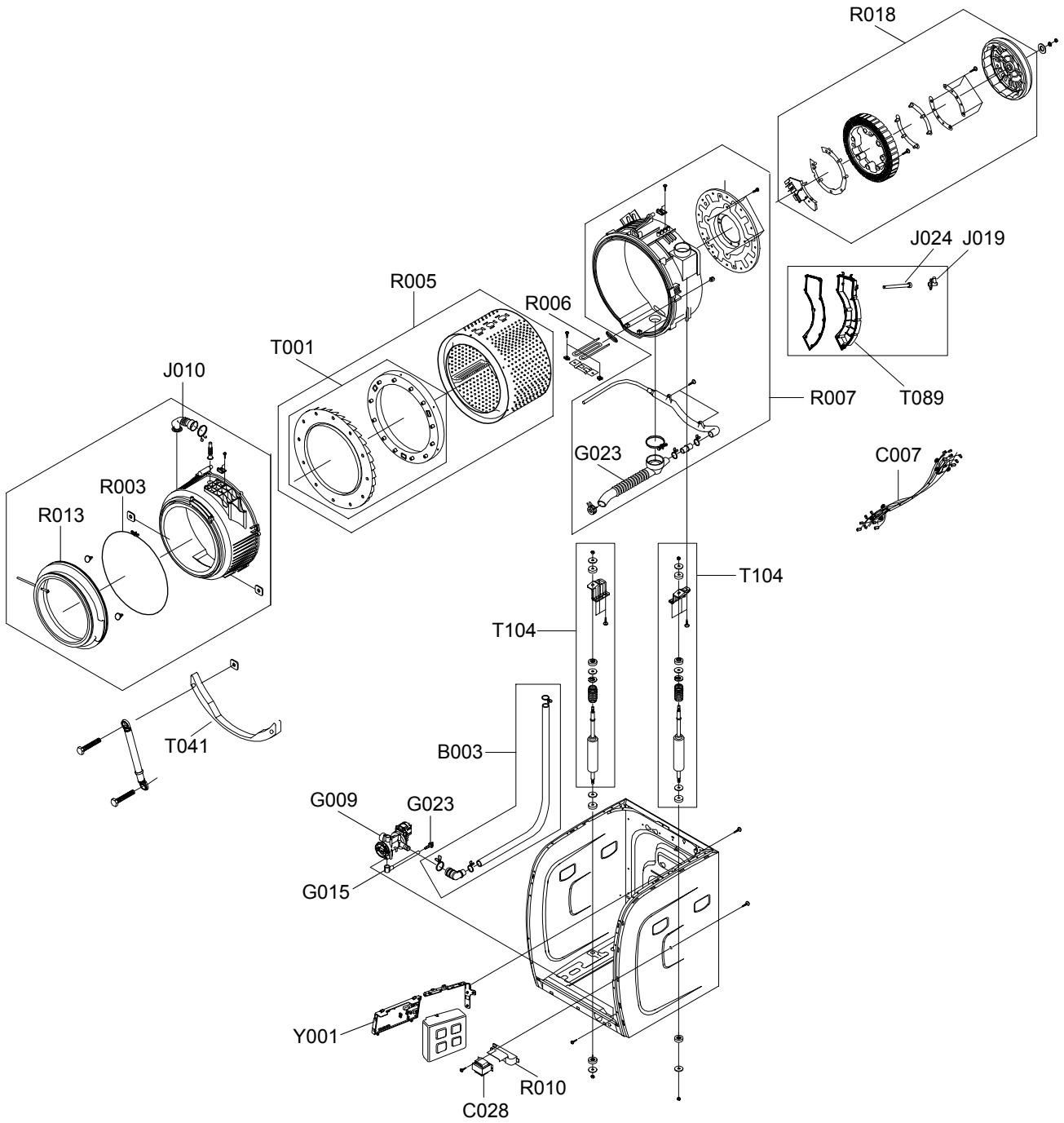
Exploded View of Detergent Tray/SUB PCB



Detergent Tray/SUB PCB Parts List

NO.	CODE NO.	DESCRIPTION;SPECIFICATION	QTY
C008	DC64-00858B	PANEL-CONTROL;H1245A,ABS,-,-,-,OUT/S	1
C051	DC97-07580C	ASSY-PANEL CONTROL;H1245AS/YLP,PANEL CON	1
G012	DC64-00505C	BUTTON-ENCODER;H1245A,ABS,-,-,SNOW-WHT,I	1
G026	DC64-00859B	INLAY-ENCODER;H1245A,PC,-,-,-,9-HOLE/W	1
G040	DC64-00854A	BUTTON-PUSH(P);WC1235A,ABS,-,-,-,POWER	1
G081	DC97-06253A	ASSY-KNOB ENCODER;SD100,ASSY-ENCODER	1
G082	DC64-00853A	BUTTON-PUSH(F);WC1235A,ABS,-,-,-,FUNCTIO	1
G100	DC69-00807A	PACKING-BUTTON(F);WC1235A,SILICON,-,-,-,	1
G101	DC69-00808A	PACKING-BUTTON(D);WC1235A,SILICON,-,-,-,	1
G102	DC69-00806A	PACKING-BUTTON(P);WC1235A,SILICON,-,-,-,	1
G103	DC64-00855A	DECORATION-BUTTON(F);WC1235A,ABS,-,-,-,-	6
G104	DC64-00856A	DECORATION-BUTTON(P);WC1235A,ABS,-,-,-,-	1
J002	DC97-04970T	ASSY-DRAWER;TS-85,GB	1
V029	DC64-00857A	WINDOW-PANEL;WC1235A,ABS,-,-,-,-,IN/HO	1
Y001	MFS-H1245A-01	ASSY PCB PARTS;K1-AG PLUS WASH	1
Y023	3405-001067	SWITCH-MICRO;125/250VAC,15A/0.1A,200GF,S	1
Y055	DC64-00852A	BUTTON-PUSH(D);WC1235A,ABS,-,-,-,DRY	1

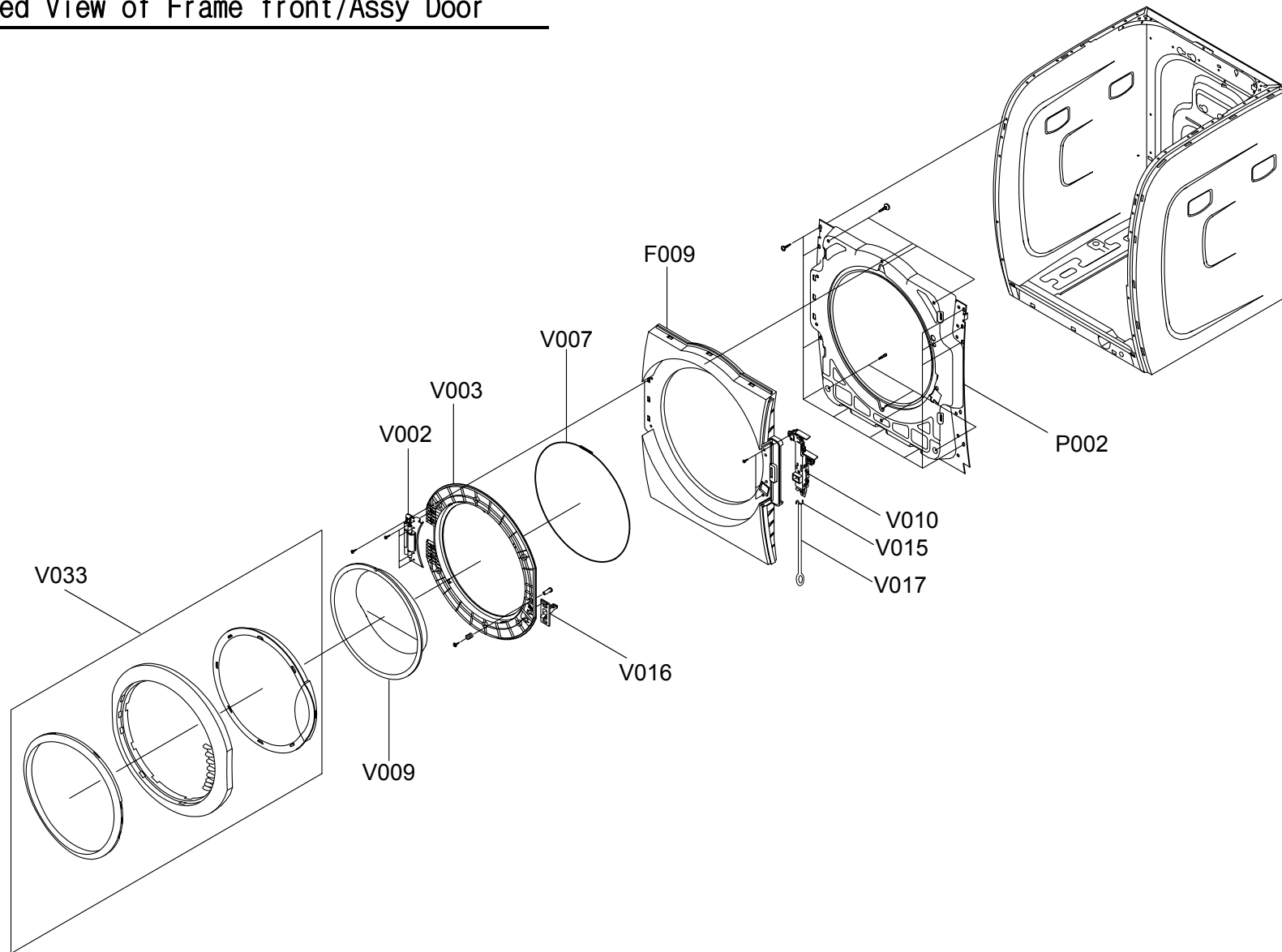
Exploded Views of TUB/Damper/Main/Motor PCB



TUB/Damper/Main/Motor PCB

NO.	CODE NO.	DESCRIPTION;SPECIFICATION	QTY
B003	DC97-02417E	ASSY-HOSE DRAIN(I);TS85-PJT,L1060	1
C007	DC96-00800A	ASSY-M.WIRE HARNESS;H1245A,K1/Ag+/COLD/W	1
C028	DC26-00009B	TRANS-REACTORV;-;SEW-SA101,-,-,220V,-,-,	1
G009	DC96-00823B	ASSY-PUMP DRAIN;SEW-HR125,220V50HZ	1
G015	DC61-10673A	CAP-DRAIN;SWF-P12,PP(TB53),-,-,-,WHT,-,-,	1
G023	DC67-00058A	HOSE-DRAIN;TS85-PJT,EPDM,-,-,-,-,BLK,-	1
G023	DC62-10302A	HOSE-DRAIN;SWF-P12,EPDM,ID5.5,-,-,L220,B	1
J010	DC67-00051A	HOSE-DRAWER;S1093~S6093,EPDM,-,-,-,-,BLK	0.77
R003	DC97-04981A	ASSY-CLAMP DIAPHGRAM;TS85-PJT,TUB	1
R005	DC97-04978A	ASSY-DRUM;TS85-PJT,LIFTER-DRUM	1
R006	DC47-00006E	HEATER;;SEW-HW125/HR125,SUS316L,1900W,,2	1
R007	DC97-04975N	ASSY-TUB BACK;SEW-4HW145A,WASHI/DD	1
R010	DC61-00856A	BRACKET-HEATER;SB-PJT,STS430,-,-,-,-,-	1
R013	DC64-00500E	DOOR-DIAPHRAGM;SEW-4HW155A,EDPM,-,-,-,-,	1
R018	DC31-00049A	MOTOR-DRUM;NEWMOTECH,SEW-HW125,-,-,-,-,1	1
T001	DC97-04980C	ASSY-BALANCER;TS85,NEW-TURBIN/PRO-CLOTH	1
T041	DC67-00060A	WEIGHT-BALANCER;TS85-PJT,FE,-,-,-,-,LOWE	1
T104	DC97-06953A	ASSY-DAMPER;SEW-HW125,SINGLE/LEFT/11kgf	1
T104	DC97-06606A	ASSY-DAMPER;SEW-HW125,GAS-DAMPER/HANIL	1
Y001	MFS-H1245A-S1	ASSY PCB PARTS;MFS-H1245A CIS	1

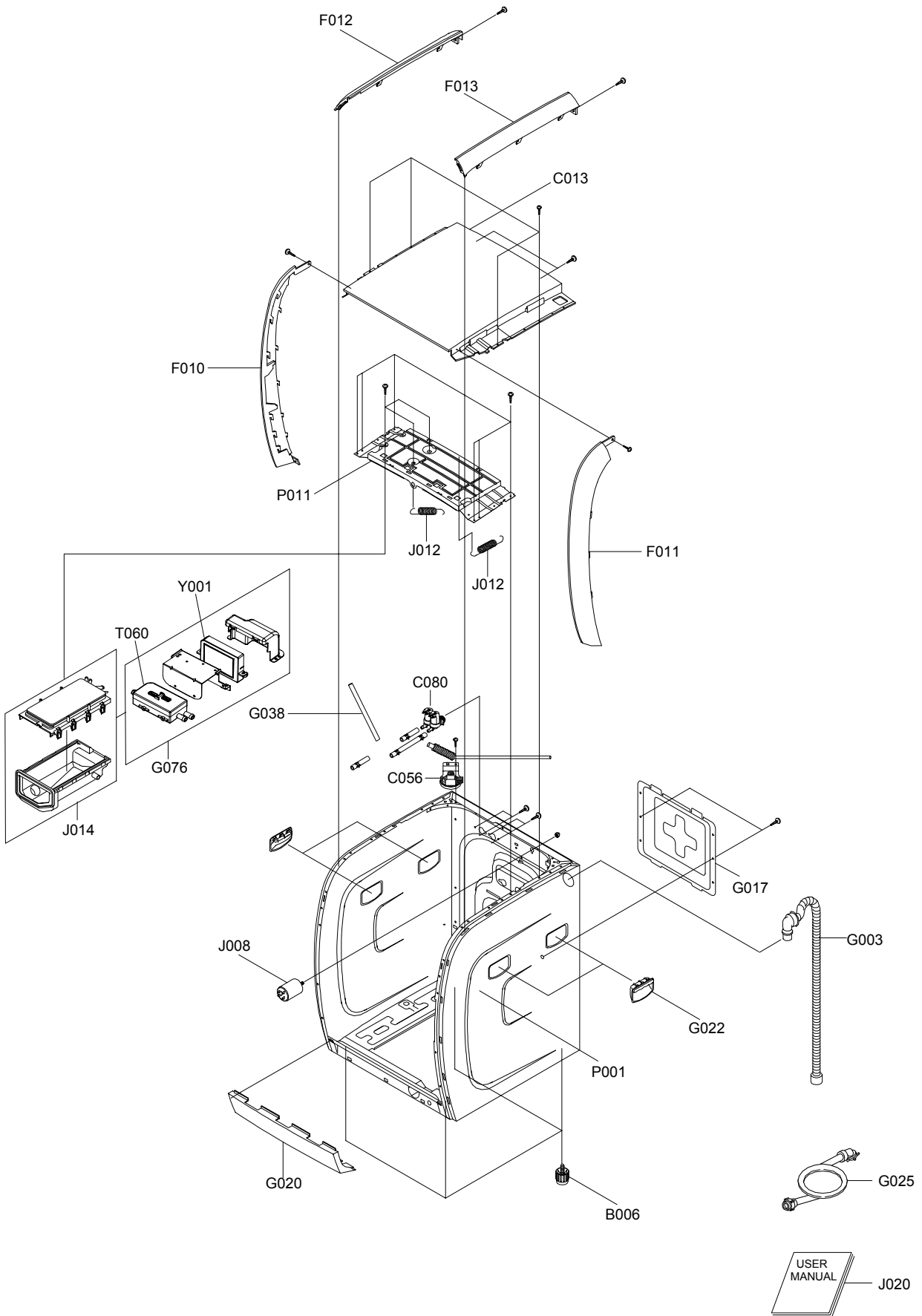
Exploded View of Frame front/Assy Door



Parts List of Frame front/Assy Door

NO.	CODE NO.	DESCRIPTION;SPECIFICATION	QTY
F009	DC63-00370B	COVER-FRONT PANEL;SEW-HW126,ABS,-,-,-,-,	1
P002	DC97-04961A	ASSY-FRAME FRONT;TS85-PJT,-	1
V002	DC97-04959A	ASSY-HINGE;TS85-PJT,STS304	1
V003	DC97-04968A	ASSY-HOLDER GLASS;TS85-PJT,FRPP/WHT	1
V007	DC97-04973A	ASSY-WIRE DIAPHRAGM;TS85-PJT,FRAME-FRONT	1
V009	DC64-00504B	DOOR-GLASS;SEW-HW125,SODALIME,-,-,-,-,-,	1
V010	DC64-00519A	DOOR-LOCK S/W;DW100,NYLON,-,-,-,-,WHT,VD	1
V015	DC61-00990A	GUIDE-LEVER;TS85-PJT,STS430,-,-,-,-,NTR,-	1
V016	DC66-00375A	LEVER-DOOR;10KG DRUM,ZNDC,2.5MM,-,-,-,-,NI	1
V017	DC66-00360A	LEVER;SEW-HW125,LDPE(XZ700),-,-,-,L292.5,-	1
V033	DC97-04969G	ASSY-COVER DOOR;SEW-HW125,SNOW-WHT(NO-SP	1

Exploded View of Frame front/Assy Door

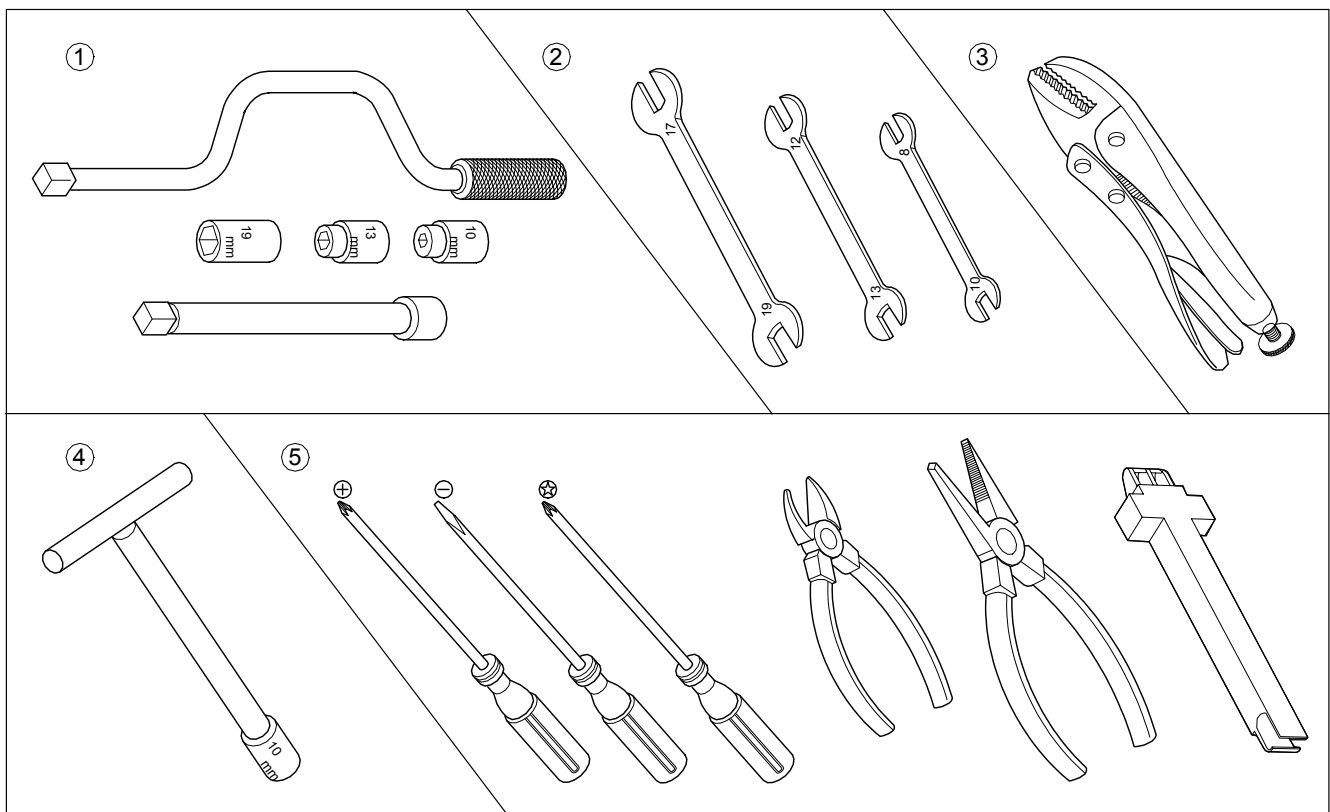


Parts List of Frame front/Assy Door

NO.	CODE NO.	DESCRIPTION;SPECIFICATION	QTY
B006	DC97-06665A	ASSY-LEG;TS-85,ASSY-LEG	4
C013	DC63-00366D	COVER-TOP;SEW-HW125,HR125,ABS(HH-106),-	1
C056	DC97-03716C	ASSY-SENSOR PRESSURE;SEW-3HW123,DN-S14T/	1
C080	DC62-00024F	VALVE-WATER;B1215J,NYLON66/250TRMN,-,-,N	1
F010	DC64-00496E	DECORATION-FRONT(L);SEW-HW125,PC-ABS,-,-	1
F011	DC64-00497E	DECORATION-FRONT(R);SEW-HW125,PC-ABS,-,-	1
F012	DC64-00498E	DECORATION-TOP(L);SEW-HW125,PC-ABS,-,-,-	1
F013	DC64-00499E	DECORATION-TOP(R);SEW-HW125,PC-ABS,-,-,-	1
G003	DC97-00139F	ASSY-HOSE DRAIN(O);P-PJT,PP/L1970/CHINA	1
G017	DC63-00375D	COVER-BACK;SEW-HW125,GI,T0.5,-,-,-,-,NO-	1
G020	DC63-00374B	COVER-FRONT(L);SEW-HW126,ABS,-,-,-,-,-,S	1
G022	DC61-20016Y	HANDLE;SEW-MM850,PP,-,-,-,-,EUN MORAE,-	4
G025	DC62-10289B	HOSE-WATER(C);WIP4013SRW,PVC+NYLON,ID10.	1
G038	DC67-00089A	HOSE-WATER;SEW-HW125,EPDM,ID5,OD9,T2,L70	1
G076	DC97-06539B	ASSY-WATER SILVER;SEW-4HR126A,SILVER KIT	1
J008	DC29-00005B	FILTER-EMI;FA-2151T-2,1.2MM NUT,250V,15A	1
J012	DC61-00911A	SPRING-HANGER;TS85-PJT,SWC,CD2.0,ID14,OD	1
J014	DC97-06605C	ASSY-HOUSING DRAWER;H1245A,AG+/WASH	1
J020	DC68-01977A	MANUAL-BOOK;H1245AS/YLP,-,-,RUSSIAN,-,-,MOJO	1
P001	DC99-00462A	ASSY-PAINT;K1,TS85-PJT,DOMESTIC	1
P011	DC61-01159A	FRAME-PLATE(U);SEW-HR125,HOT-GI,-,-,-,-,T1	1
T060	DC97-06485B	ASSY-GUIDE WATER;SEW-4HR126A,ONE SIDE HO	1
Y001	MES-AGMOD-S1	ASSY PCB PARTS;K1-AG MODULE	1

5. Tools used for assembly and disassembly

NO	Tool		
1	Box driver	10mm 13mm 19mm	Heater(1), Tub(16), Fixer screw(5) Motor(1), Balance(5), Shock Absorber (2 holes each in left/right), Pulley(1) ,Damper(oil)(2), Damper(friction 1)
2	Double-ended spanner	10, 13, 19mm	Replaced by box driver Leg
3	Vice pliers		A Tool for protecting empty turning of bolt or abrasion from using box driver For disassembly of Spindrum
4	T자 10mm BOX(over 250mm)		For disassembly of Heater
5	Etc.(screwdriver, nipper, long nose)		General tools for A/S activity





This Service Manual is a property of Samsung Electronics Co.,Ltd.
Any unauthorized use of Manual can be punished under applicable
International and/or domestic law.

©Samsung Electronics Co., Ltd. APRIL 2004
Printed in Korea
Code No. : DC68-02158A

3. Error Mode

표시	Error Description	Error Sensing	Error Release
5 E	Water drain abnormal	When water didn't reach the reset level within 4 minutes after the start of water drain,	Re-start releases Error.
d E	Door open/close abnormal	When door was opened at the starting time of operation.	Re-start releases Error.
d E 1	Door lock S/W abnormal	When Door S/W didn't function with Door Close signal, or When Door S/W didn't function with Door Release signal.	Reset of Power S/W releases Error.
d E 2	Door lock S/W abnormal	When more than 20 times of Start signal were added to Door lock coil for 2 minutes,	Error will be released 2minutes after Error occurrence or by Reset of Power S/W.
U E	Un-Balance abnormal	When Unbalance was still sensed after performing 3 times of Unbalance release during the last time of dehydration,	Re-start releases Error.
H E	Abnormal temperature sensed (Wash Heater Part)	When higher than 100℃ of water temperature was sensed by Thermistor,	After Error is displayed, Power will be automatically OFF.
H E 1	Heating abnormal	When the temperature changed more rapidly than 7℃/min during the Heating (for boiling course as an example)	Reset of Power S/W releases Error.
4 E	Water supply abnormal	When water was not supplied to the target level in 15 minutes	Re-start releases Error.
1 E	Water level sensor abnormal	When the input signal of water level sensor was higher than 30KHz, or less than 10KHz	Reset of Power S/W releases Error.
o F	Over-Flow abnormal	This error happens when water level reached the Overflow level(less than 20.48Kh), Door is not opened at this time. (the water is drained by force to the water level less than 22.82Kz)	Error will be released by draining water to the level for Door Open.
3 E	Motor abnormal	When more than 16 times of sequential abnormal signals were sensed by Motor Drive Micom(abnormal at Hall-ic, or winding wire)	Reset of Power S/W releases Error.
11 E	Water leak	When water level went down below the Reset level during the washing or rinse.	Reset of Power S/W releases Error.
12 E	Power S/W abnormal	When the electric contact was not detached during the Power on/off	Reset of Power S/W releases Error.
13 E	Signal communication abnormal	When signal communication was abnormally interrupted between Main Micom and Display Micom for longer than 5sec, and between Main Micom and Motor Micom for longer than 7sec	When the communication is normalized after Re-start, Error will be released.
t E	Themister abnormal	When Themister was opened or under detection for checking electric short	After Error is displayed, Power will be automatically OFF.
8 E	Feed hoses of Hot/Cold water oppositely connected.	When hotter than 50℃ of water was supplied for the Wool/Lingerie Course	Reset of Power S/W releases Error.
14 E	Button abnormal	When a button was being continuously pressed longer than 1 minute	When Button Under Pressed was released, Error will be automatically released.
CE	Cooling abnormal	When water temperature was not cooled down below 50℃ within 30 minutes after the Heating	Re-start releases Error.

4. Symptoms of Errors and Related Parts to be Checked

	Symptoms of Errors	H e a t e r	M a i n M o t o r	H a l l S e n s o r	W a t e r L e v e l S e n s o r	E M I F i l t e r	L e g F i l t e r	W a t e r S u p p l y V a l v e	D a m p e r	P o w e r C o d e	T h e r m i s t o r	T h e r m o s t a t	D o o r S / W	D r a i n P u m p	W a t e r F e d H o s e	D r a i n H o s e	D o o r O p e n	D o o r L e v e r	M a i n P C B	P o w e r S/ W	M a n u a l L e v e r	D i a - f r a m e	
1	Power not On(12E)					○				○										○	○		
2	Heating not performed.(Boiling course not functioned)	○									○	○								○			
3	Water leaks(11E)	○						○				○		○	○	○							○
4	Electric leakage happens(circuit breaker gets down).	○				○		○		○		○	○	○						○	○		
5	Water not supplied.(4E)				○			○							○					○			
6	Door not locked/not opened.(dE,dE1,dE2)				○								○					○	○	○	○		
7	Motor not rotated.(3E)		○	○						○			○							○			
8	Water not drained.(5E)				○									○		○				○			
11	Loud noise during the dehydration.(uE)						○		○					○									
12	Smoke rises from washing machine.	○	○							○		○	○	○						○	○		
13	Foam comes out.				○															○			○
14	Noise during the water drain													○									
15	Thermistor abnormal(tE)	○									○									○			
16	Hot/Cold water oppositely supplied(8E)							○							○								